

SANYO

AA/AAA Charger Ni-MH Operating Instructions

Thank you for purchasing this SANYO product. Please read and understand these instructions carefully to ensure safe and satisfactory operation. Keep these instructions handy for future reference.

Specifications

Sanyo Model No.	NC-MON04A	
Voltage	AC 240V	
Input	50Hz 5W	
Output	DC 2.4V	250mA x 2(AA) 120mA x 2(AAA)
LED Indicator	ON - charging OFF - Timer off (approx. 16hours)	
Battery / Charge time approximate hours	eneloop Ni-MH AA (typ. 2000mAh)	10(h)
	eneloop Ni-MH AAA (typ. 800mAh)	8(h)
	Ni-MH AA (typ. 2700mAh)	13(h)
	Ni-MH AA (typ. 2500mAh)	12(h)
	Ni-MH AA (typ. 1700mAh)	8(h)
	Ni-MH AAA (typ. 1000mAh)	10(h)
	Ni-MH AAA (typ. 900mAh)	9(h)
Dimensions (L x W x H)	118 x 75 x 40 mm	
Weight	approx. 230 g.	

* The above charging times are estimated hours to complete charging. The LED Indicator remains lit even after these charging times have elapsed. A protection timer switches the LED off after approx 16hrs of continuous charging in an electrical outlet.

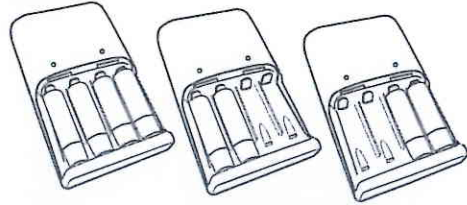
Features

- Exclusively for use with SANYO NiMh (Nickel Metal Hydride) AA and AAA (HR-3U & HR-4U) sized rechargeable batteries.
- AA & AAA mixed batteries cannot be charged together in one channel and single batteries cannot be charged in one channel.

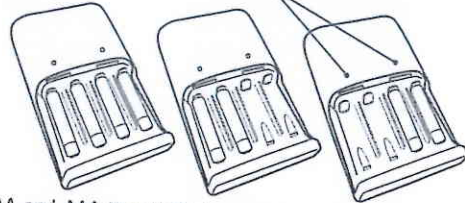
HOW TO INSERT THE BATTERIES

Please charge 2 to 4 batteries simultaneously.

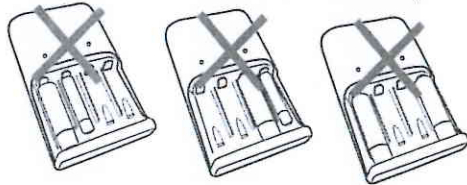
AA type



AAA type



AA and AAA type batteries cannot be charged by two slots of one side of a charger together. A battery cannot be charged also when it is set by only one battery



Operating Instructions

CHARGE INDICATOR LIGHT

The LED is on during charging and is switched off by the protection timer after approx 16 hrs of continuous charging.

HOW TO CHARGE

1. Place 2 or 4 AA or AAA size batteries into the charger so that the + (positive) and - (negative) ends (terminals) of the batteries correspond to the same + and - positions in the charger.
2. Plug the charger into an electrical outlet (socket) of AC 240V voltage. The LED indicator light should light and battery charging begins. (NOTE: Batteries may become hot during charging). The charging time depends on battery type. See chart.
3. Disconnect the charger from the electric outlet once charging is complete.
4. Remove the batteries from the charger. Note, batteries can become hot after charging.

CAUTION! DANGER!

- The protection timer will not be initiated if additional batteries are added mid charge cycle.
- The charger including batteries must be placed in an electrical outlet (socket) for the batteries to charge.
- The charger and batteries must not be covered during charging

Recommended temperature ranges for use:

	Ni-MH
To use (discharge) the batt.	0°-50°C
To charge the batt.	0°-35°C
To store the batt.	-20°-30°C

Using the batteries outside of the above temperatures may shorten battery life and decrease efficiency.

Notes ON battery and charger usage

WARNING!

- Use to charge SANYO Ni-MH AA/AAA rechargeable batteries only.
- Never put dry (primary) batteries into the charger.
- Do not immerse in water or use in humid areas such as a bathroom.
- Insert batteries correctly by matching + (positive) and - (negative) ends (terminals) of the battery to the corresponding + and - position in the charger.
- Disconnect the charger from the electric outlet before cleaning, for maintenance or when not in use.
- Be sure to use the charger with correct voltage only AC 240V.
- Always unplug the charger after used.
- Never handle charger or batteries with wet or moist hands.
- Be sure to charge batteries between 0°C - 35°C.
- Do not insert any object (such as a screwdriver or metal wire) into the charger.
- Do not modify or disassemble the charger.
- If something appears wrong with the charger and/or batteries, disconnect from the electric outlet immediately and contact the nearest service center.
- Young children should be supervised to ensure that they do not play with the appliance.
- This appliance is not intended for use by young children or infirm persons unless they have been adequately supervised by a person to ensure that they can use the appliance safely.
- Store in a dry cool place.