



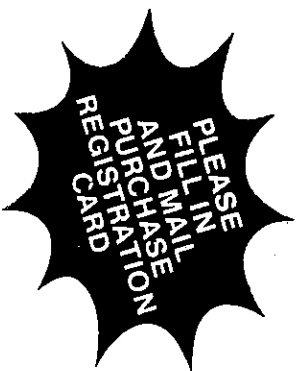
SANYO

ROTARY

**Operation
guide to
confident
colour viewing**

SANYO

TELECCOLOR



Confidence in Sanyo Telecolor
comes from a confident understanding
of how your set operates . . .

Introduction

Your new SANYO TELECOLOR receiver is a highly complex, precision engineered instrument incorporating the most modern features of advanced technology.

There is no real necessity for you to have a knowledge of its more involved operational procedures, but you should understand the basic controls and the general operation of the set. Careful reading of this guide will lead to trouble-free viewing.

If more complex problems arise, check your obligations under the terms of the Sanyo Warranty contained in this guide. ENSURE THAT YOU HAVE MAILED YOUR PURCHASE REGISTRATION CARD and call Sanyo or your authorised Sanyo Service Agent.

1. Unpacking

This should be treated with extreme care. Follow instructions on all tags and labels before attempting to operate your receiver.

2. Power Connection

This receiver should be connected to a power point which complies with STATE ELECTRICAL AUTHORITY STANDARDS (230-260 volts, 50 Hz, AC only).

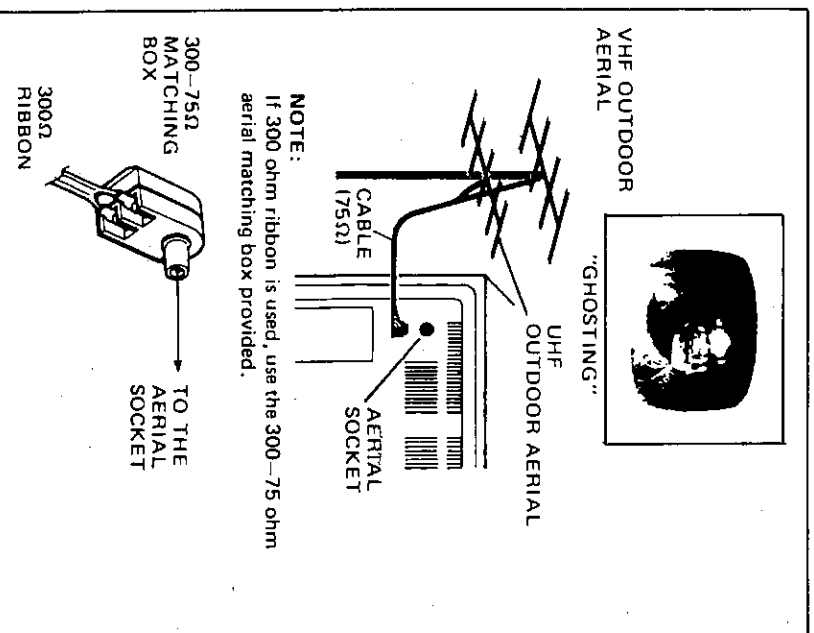
AERIAL CONNECTION

1. The telescopic aerial is an auxiliary aerial and will only provide satisfactory reception in areas near the transmitter. For good reception, adjust the aerial by varying the length and angle of the rods until the clearest picture is obtained (18 and 20 inch models only).
In some areas it will be necessary to use an outdoor aerial.
2. Connect the lead from outdoor aerial to aerial terminal socket provided back of set.
3. If you intend to use a previously installed aerial, check it carefully. Weather can destroy the effectiveness of the aerial and cable.
Also bear in mind the aerial may not have been designed for the flat response necessary for good colour reception. "Snow" or weak picture is a result of either a weak signal or poor aerial. Reflections of signals from mountains or high buildings will cause multiple images, "Ghosting". (Refer to illustration on the right.) These abnormal conditions can be reduced to minimum by repositioning the aerial or by installing a new one suited to your area.
If you live in a difficult reception area, or if you experience difficulties, consult your dealer.
- 4.

FOR YOUR SAFETY
Install any external aerial to AS1417.1

(AUSTRALIAN STANDARDS ASSOCIATION SPECIFICATION)

Ensure that the aerial lead is connected to the aerial terminal at the rear of the set.



GENERAL OPERATION

Before attempting to operate this receiver, please read through the following instructions carefully. You will find that it is time well spent and contributes greatly to many years of enjoyable viewing.

Pull - On/Volume

Pull this control to turn the receiver on. Clockwise rotation of this control increases volume, anticlockwise rotation decreases volume. Push this control in to turn the receiver off.

VHF Operation

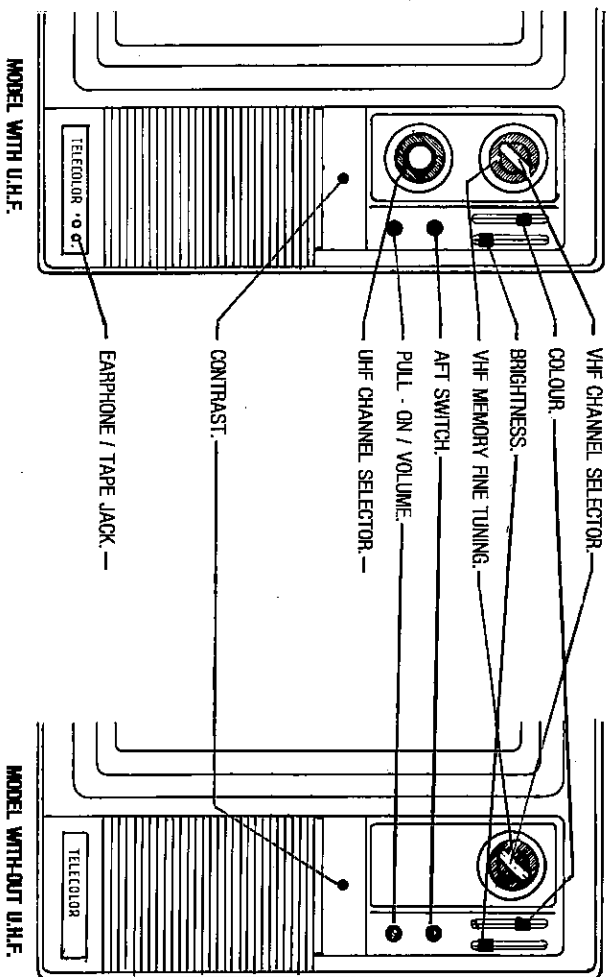
1. Be sure the AFT switch is in the OFF position (outer position).
2. Rotate the VHF Channel Selector until desired channel number is under index mark.
3. Push in and rotate the VHF Memory Fine Tuning Knob slowly clockwise until interference appears. Then rotate it anticlockwise for best picture and sound.
4. Repeat this procedure for all VHF channels received in your area. Once the Memory Fine Tuning has been set for each active channel in your area, further adjustment will seldom be necessary.
5. After VHF channel has been fine-tuned, depress the AFT switch to the ON position (inner position) to maintain the sharpest picture and the clearest sound under all normal conditions.

UHF Operation

1. Be sure the AFT switch is in the OFF position (outer position).
2. Rotate the VHF Channel Selector until "U" is under index mark.
3. Rotate the UHF Channel Selector until desired channel number is under index mark.
4. After the picture appears, rotate the UHF Channel Selector slowly in either direction for best sound and picture quality.
5. Then depress the AFT switch to the ON position (inner position) to maintain the sharpest picture and the clearest sound under all normal conditions.

IF YOUR RECEIVER IS CORRECTLY TUNED, THERE WILL BE VERY LITTLE CHANGE IN THE QUALITY OF YOUR PICTURE WHEN THE AFT SWITCH IS DEPRESSED TO THE ON POSITION.

CONTROLS



KNOW YOUR CONTROLS

The Contrast control is located in the control box as shown in the photograph on the previous page. Access to these controls is gained by pulling the right-hand side of the door with your finger and opening. After adjustment, push the door closed until it clicks shut.

First tune in black & white . . .

Your colour set should be properly tuned for best black and white picture before tuning colour, so firstly, remove all colour by adjusting the "colour" control. Next, adjust contrast and brightness for a pleasing black and white picture, as you would for a monochrome set.

Now add colour . . .

Adjust the COLOUR control to bring colour into the picture until it reaches the intensity you desire. No further adjustments are required. Your Sanyo receiver is now set for normal viewing conditions and should require little or no adjustment for some time to come.

AFT

(Automatic Fine Tuning)

This feature automatically compensates for local oscillator frequency drift in the tuners.

Brightness

Determines the brilliance of the picture and is adjusted in conjunction with the CONTRAST control.

Contrast

Provides the proper contrast between the black and white elements of the picture. Properly adjusted, it will be possible to observe a gradation between blacks, greys and whites in the picture.

Colour

After the channel has been tuned in properly for a black and white picture, adjust the COLOUR control for the desired intensity of colour. Excessive use of the COLOUR CONTROL will give a picture a "flushed" or a too brilliant picture.



CORRECT PICTURE COLOUR



IF COLOURS APPEAR TOO FADED,
SLIDE THE COLOUR CONTROL UPWARDS



IF COLOURS APPEAR TOO FLUSHED,
SLIDE THE COLOUR CONTROL DOWNWARDS

Earphone/Tape Jack

Your receiver is equipped with earphone and tape recording facilities and the terminals are as shown in the diagram. When jack marked (•) is used, the receiver's speakers will not operate (earphone). When jack marked (:) is used, both earphone and speakers will operate (tape recording). Recording levels may be set using the receiver volume control.

CARING FOR YOUR SANYO TELECOLOR

Avoid excessively hot locations. Damage to the cabinet or premature transistor failure may result.

The bottom and rear of the cabinet are provided with ventilation holes. Do not place the receiver on top of thick cloth, or attempt to cover openings in any way.

When the receiver is not in use for a few days, it is advisable to disconnect the AC plug from the wall socket.

The surface of the cabinet can be easily damaged if not properly maintained. Many common household aerosol sprays, cleaning agents, solvents and polishes will cause permanent damage to the fine surface. Best results for cleaning are obtained with mild soap and water, and a soft cloth for drying.

OUTSIDE INTERFERENCE CAUSES AND CURES

Snow or weak picture

This condition may be evident when the signal to the receiving aerial is low. For the best possible reception, an outdoor aerial is essential.



Sound Bars in picture

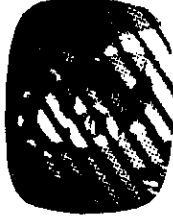
Maladjustment of the Fine Tuning may cause "Sound Bars". These are eliminated by adjusting the Fine Tuning control as explained in "General Operation".



Radio Interference

Interference in the form of ripples or unstable pictures may result from neighbouring receiving or transmitting equipment, flashing neon signs, or electrical appliances.

If receiver adjustment does not eliminate this interference, the interference source must be located and corrected.



Diathermy

Electrically operated medical equipment such as diathermy apparatus may produce a herringbone pattern across the picture and, if severe, may even obliterate part of the picture. This interference normally is of short duration, and cannot be removed by receiver adjustment. If severe, the interference source must be located and corrected.



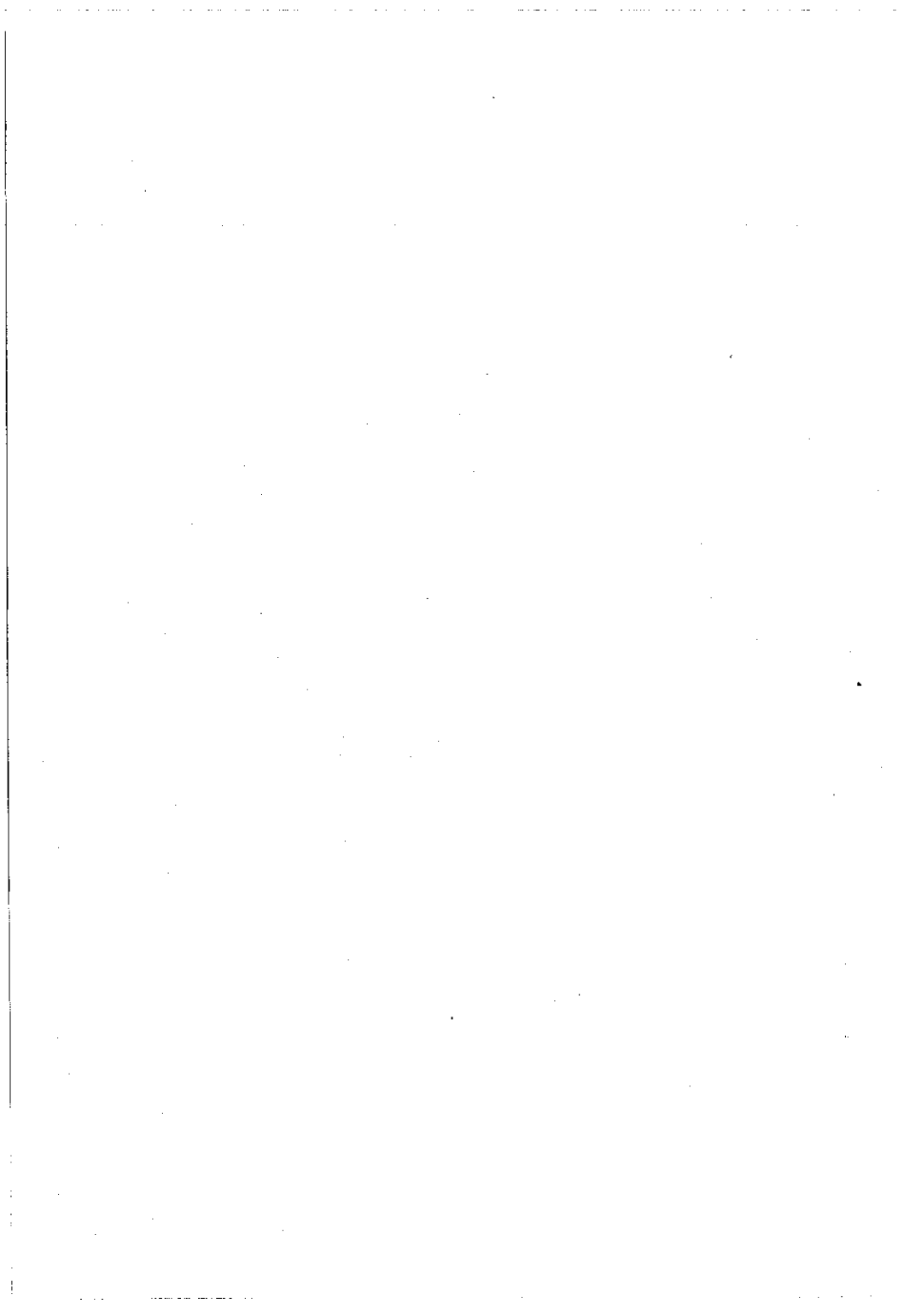
TECHNICAL DATA

	20 Inch	22 Inch	26 Inch
Power Source	AC 240V, 50 Hz	AC 240V, 50 Hz	
Power Consumption	70 Watts	85 Watts	
Tuning Range	VHF Channels 0 to 11 UHF Channels 21 to 69	VHF Channels 0 to 11 UHF Channels 21 to 65	
Aerial Input Impedance	75 Ohm	75 Ohm	
Semiconductors	5 Integrated Circuits 6 Transistors 4 Thick Film	5 Integrated Circuits 6 Transistors 4 Thick Film	
Picture Tube	48cm Diagonal, 90° degree	53cm Diagonal, 90° degree	
High Voltage	23 KV stabilized	25 KV stabilized	
Sound Output	3 Watts	3 Watts	

SANYO TELECOLOR TROUBLE SHOOTING GUIDE

Before calling for Service
check the following.
It may save you
unnecessary expense.

EFFECT	PROBABLE CAUSE	CURE
Loss of Colour or Intermittent Colour	Fine tuning Maladjusted	Check that fine tuning is correctly set on all channels. AFT MUST be switched off BEFORE making fine tuning adjustments. <i>NOTE: This adjustment is NOT covered under warranty</i>
Loss of Colour or Intermittent Colour	Faulty antenna system Location	A good black & white picture does NOT necessarily indicate the antenna system is suitable for colour if pictures are snowy particularly on the higher bands, i.e. Ch 6,7,8,9. This would point to antenna trouble. If your antenna has been in use for three years or more it would be advisable to have this checked in any event, if you wish to enjoy the best possible colour viewing.
Flashed across the Screen	Interference Faulty antenna system Faulty connection between antenna outlet and receiver	Have antenna system checked. -Check fly-lead connections. <i>NOTE: This service is NOT covered under warranty.</i>
COLOUR BLOTCHES IN PARTS OF PICTURE	RECEIVER PURITY OUT OF ADJUSTMENT	This effect can be due to stray magnetic fields often caused by. (1) A loudspeaker (radio, radiogram, tape or cassette recorder) being placed too close to receiver. (2) Switching a vacuum cleaner off close to receiver. (3) Electrical appliance too close to receiver i.e. electric fan, refrigerator, motor driven lamp, etc. To correct, switch receiver off and allow to cool down for 15 minutes. Move offending article well away from receiver. Switch receiver on again. In most cases this will be sufficient. If not receiver will require degaussing and set up by your service man. <i>NOTE: This service is NOT covered under warranty.</i>



SANYO TELECOLOR SERVICE CENTRES

Sanyo operates wholly owned service facilities staffed with factory trained servicemen to carry out after sales service at the addresses listed opposite.

Elsewhere there is an extensive network of fully trained and authorised service organisations standing by to help you.

**Specifications subject to
change without notice.**

**Before calling for Service, please
consult the trouble shooting
guide contained in this booklet.**

QUEENSLAND:

Cnr. Alfred & Julia Streets,
FORTITUDE VALLEY. 4006
Telephone: 52 8588

40 Punari Street,
Curralong,

TOWNSVILLE. 4812
Telephone: (077) 79 9088

NEW SOUTH WALES:

14 Mars Road,
LANE COVE. 2066
Telephone: 428 5822

NEWCASTLE:

Cnr. Parry & Arnott Streets,
COOKS HILL. 2300
Telephone: (049) 25 197

A.C.T.:

11 Kambelia Street,
FYSHWICK. 2609
Telephone: 80 6422

VICTORIA:

130 Dudley Street,
WEST MELBOURNE. 3003
Telephone: 329 7266

TASMANIA:

67A Elizabeth Street,
LAUNCESTON. 7250
Telephone: 31 5522

SOUTH AUSTRALIA:

104 Mooridge Avenue,
NORTH PLYMPTON. 5038
Telephone: 294 3288

WESTERN AUSTRALIA:

1 Thorogood Street,
VICTORIA PARK. 6100
Telephone: 361 4744

**Telephone numbers subject
to change.**