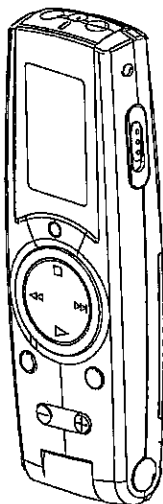


SANYO

INSTRUCTION MANUAL
ISTRUZIONI PER L'USO
Digital Voice Recorder
Registratore vocale digitale

ICR-A120
ICR-A125M



GB English
D Deutsch
F Français
I Italiano
S Español

Precautions

- The apparatus shall not be exposed to dripping or splashing.
- Do not remove the batteries while operating the unit.
- Do not insert pins, etc., inside the unit.
- Do not drop the unit or subject it to strong shocks.
- Do not use where there are extremes of temperature (below 5°C(40°F) or exceeding 35°C(95°F))
- IBM and PC/AT are registered trademarks of International Business Machines Corporation.
- Microsoft, Windows Media™, and the Windows® Logo are trademarks or registered trademarks of Microsoft Corporation in the United States and/or other countries.
- Windows Media™ Player is trademark or registered trademark of Microsoft Corporation.(ICR-A125M)
- Other system and product names generally are the registered trademarks or trademarks of the respective development manufacturers. The symbols™ and® are not shown in this manual.
- SANYO takes no responsibility for recording failure due to power cuts or damage to the unit.
- To avoid potential risk of data loss caused by accidental operation or malfunction of the unit, we recommend that you save a backup copy of your recorded message on a PC, etc..
- Recording copyright material without permission of the copyright owners is usually an infringement. If you wish to re-record copyright material, permission from the copyright owner is necessary. SANYO does not approve of, and cannot be held responsible for, any unlawful use of this machine.



Precautions

Note:

This handling description is printed prior to product development. When a part of the product specification must be changed to improve operability or other functions, priority is given to the product specification itself. In such instances, the instruction manual may not entirely match all the functions of the actual product. Therefore, the actual product and packaging, as well as the name and illustration, may differ from the manual.

The screen/LCD display shown as an example in this manual may be different from the actual screen/LCD display.



Your SANYO product is designed and manufactured with high quality materials and components which can be recycled and reused.

This symbol means that electrical and electronic equipment, at their end-of-life, should be disposed of separately from your household waste.

Please dispose of this equipment at your local community waste collection/recycling centre.

In the European Union there are separate collection systems for used electrical and electronic products.

Please help us to conserve the environment we live in!

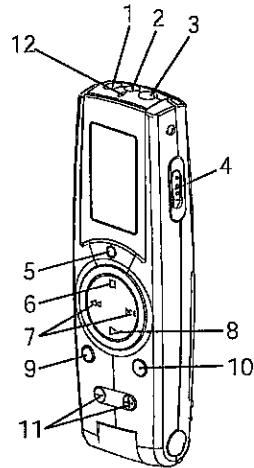
Note: This symbol mark and recycle system are applied only to EU countries and are not applied to other countries of the world.

Accessories

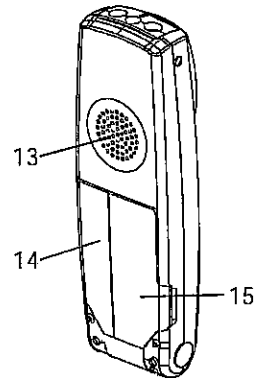
CD-ROM(Instruction Manual, USB driver) x 1
Quick guide x 1

Controls

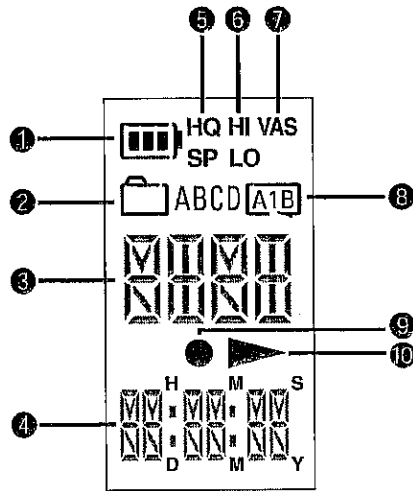
1. Headphones socket (📞)
2. Built-in microphone
3. External microphone socket (🎤 (MONO))
4. Hold switch (HOLD)
5. Record/Pause button (●)
6. Stop/Menu button (■)
7. Skip/Search buttons (⏮/⏭)
8. Power/Play (▶)
9. Erase button (ERASE)
10. Enter button (ENT)
11. Volume buttons (VOL. , +, -)
12. REC LED



13. Speaker
14. Battery compartment lid
15. USB terminal , Cover



LCD display

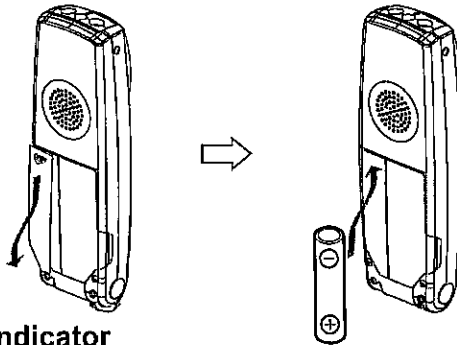


- ① Battery indicator
- ② Folder (A,B,C,D)
- ③ Mode display / File Index
- ④ Time, DD/MM/YY
- ⑤ Recording mode (HQ/SP)
- ⑥ Microphone sensitivity (HI/LO)
- ⑦ VAS mode (Voice Activated System)
- ⑧ Repeat (A-B, 1)
- ⑨ Record Mark
- ⑩ Play Mark

Before use

Inserting batteries

One AAA / LR03 / HP16 alkaline battery(not supplied)



Battery indicator

Check the battery indicator on the LCD display for remaining battery power.



: Good condition



: Weak battery




: Exhausted batteries, must be replaced with new alkaline battery. If not, after displaying LOW bAtt, the LCD display goes out.

IMPORTANT NOTE:


SPENT OR DISCHARGED BATTERIES MUST BE RECYCLED OR
DISPOSED OF PROPERLY IN COMPLIANCE WITH ALL
APPLICABLE LAWS.

FOR DETAILED INFORMATION, CONTACT YOUR LOCAL COUNTY
SOLID WASTE AUTHORITY.

Using headphones

Connect the headphone(not supplied) to the  socket for private listening.
The speaker is automatically disconnected.

Using an external microphone

Connect an external microphone (not supplied) to the  socket. The built-in microphones are automatically disconnected.

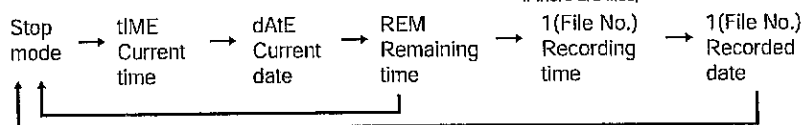
Power ON / OFF

To power on/off, press and hold down the POWER/PLAY button for approx. 2 seconds.

"ON/OFF" appears briefly.

Selecting display

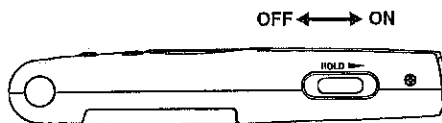
In the stop mode, press the STOP/MENU button repeatedly, the display changes as follows:



Hold ON / OFF

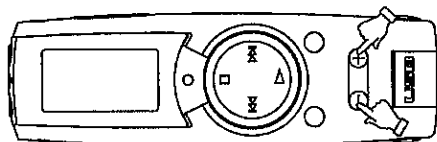
Slide the HOLD button for ON/OFF

This prevents operation from stopping by accidentally pressing a button during recording or playback.



To Adjust the volume

Press the VOL (+) (-) button to control the volume level (0 ~32) in STOP / PLAY BACK / RECORD mode.



Recording

Recording time

Recording mode	Recording time(approx)
HQ: High-quality	4hr. 10min
SP : Standard	8hr. 30min

Recording/Pause/Stop

Press ENT button in the stop mode and select a folder("A", "B", "C", or "D") in the stop mode.

Press the REC button once to start recording in the stop mode.

Press the REC button once to pause in the recording mode.

Press the REC button again to resume recording.

Press the STOP button once to stop recording in the recording mode.

Note:

- The unit can record up to 99 files in one folder. "FULL" appears when attempting to record the 100th file.
- Since the M folder is the music folder, ordinary voice data cannot be recorded to it, and is instead recorded automatically to the A folder.(ICR-A125)

Mode Setting for Recording

1. REC Mode

In the stop mode, press and hold down the STOP/MENU button. Then select REC setting mode (SP/HQ) with **◀ / ▶** button. Press the ENT button, then selected mode blinks. Select HQ/SP with **◀ / ▶** button. Press the ENT button again to set mode.

2. MIC Sensitivity

In the stop mode, press and hold down the STOP/MENU button. Then select MIC setting mode with **◀ / ▶** button. Press the ENT button, then selected recording mode blinks. Select HI/LOW with **◀ / ▶** button. Press the ENT button again to set mode.

3. VAS Setting

In the stop mode, press and hold down the STOP/MENU button. Then select VAS setting mode with **◀ / ▶** button. Press the ENT button, then selected mode blinks. Select OFF/1/2 with **◀ / ▶** button. Press the ENT button again to set mode.

4. Select REC LED

In the stop mode, press and hold down the STOP/MENU button. Then select LED setting mode with **◀ / ▶** button. Press the ENT button, then selected mode blinks. Select ON/OFF with **◀ / ▶** button. Press the ENT button again to set mode.

* Press STOP/MENU button to quit the mode setting menu.

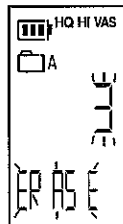
ERASING

File ERASE

In the stop mode, press the ERASE button shortly to select ERASE mode.

Select a file with ◀◀ / ▶▶ and press the ERASE button for approx. 2 seconds. Then the file is erased.

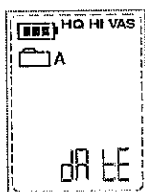
* If there is no operation for 5 seconds, it returns to the previous stop mode.



Other Menu Setting

1. Date(dAtE)/Time Setting

- (1) In the stop mode, press and hold down the STOP/MENU button and select Date setting mode with **◀◀ / ▶▶** button. DATE displays.
- (2) Press the ENT button to select Date/Time setting mode. (date and time displays)
- (3) You can set it orderly: Year (00~99) ⇒ Month(1~12) ⇒ Date(1~31) ⇒ Hour(1~24) ⇒ Minute(00~59)
- (4) Select setting with **◀◀ / ▶▶** button (Setting mode will blink).
- (5) After setting, press ENT button to select next setting.
- (6) After setting the final "Minute", press the ENT button to return to the main Date/Time setting mode.
- (7) During each setting, press the STOP button to cancel the setting and return to the previous date.



<Main setting screen>



<Date setting screen>



<Time setting screen>

2. Format(FORMAT)

In the stop mode, press the STOP/MENU button longer to select Format(FORMAT) setting mode with **◀◀ / ▶▶** button.

Initial stting is "OFF"

Press the ENT button once, "OFF" blinks

Then select ON/OFF with **◀◀ / ▶▶** button.

Press the ENT button on the "ON" mode and set the format.

Press the STOP button during format setting to return to the previous menu.

3. Version display

In the stop mode, press and hold down the STOP/MENU button longer to select display mode with **◀◀ / ▶▶** button.

4. BEEP(bEEP) Setting

In the stop mode, press and hold down the STOP/MENU button.

Then select BEEP(bEEP) setting mode with **◀◀ / ▶▶** button.

Press the ENT button once then "ON/OFF" blinks.

Select ON/OFF with **◀◀ / ▶▶** button. Press the ENT button again to set mode.

* Press STOP/MENU button to quit the mode setting menu.

Using the unit connected to a PC

Operating environment

Supported PCs	IBM PC/AT compatible
Supported OS	Windows XP Professional Windows XP Home Edition Windows Millennium Edition (Me) Windows 2000 Professional Windows 98 Second Edition
USB port	One required for connection
Sound board	16-bit Windows-compatible sound board supported
Other	Speakers or headphones required

Note:

- Operation is not guaranteed for Macintosh PCs.
- Operation is not guaranteed for the following environments.
 - Upgraded Windows environments
 - Windows 95, Windows 98, Windows NT
 - Dual-boot Windows environments
- Operation is not guaranteed for all PCs, even if they comply with the recommended environment.
- Standby, suspend, and other modes may not work properly with your particular environment. If this is the case, do not use those modes.
- A USB driver is required for Windows 98SE. The USB driver must be installed from the CD-ROM(supplied).

Installing the USB driver

If you are using Windows 98SE, you need to install the USB driver.

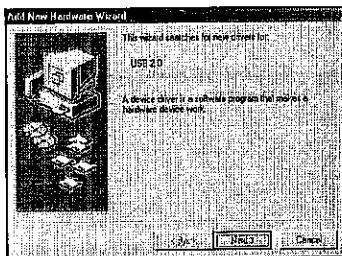
- This USB driver is for Windows 98SE only.
- Macintosh PC is out of our support and not guaranteed of operation.
- Reproduction of this driver is forbidden.
- This driver shall not be copied and reprinted.
- SANYO shall not be liable for any damages arising out of the use of this driver.

● Installing USB Driver for Window 98SE

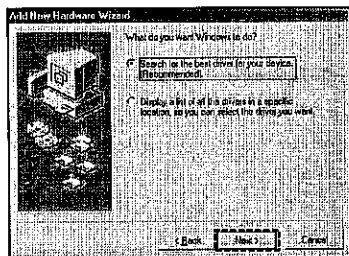
Start up your PC and insert the CD-ROM(supplied)to the CD-ROM drive of the PC.

1.Connect the unit to the PC.

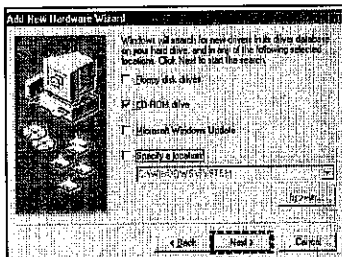
2.USB device will be detected as a new Hardware and show you the message as below.



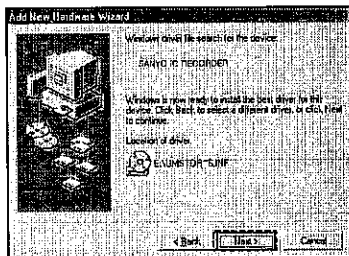
3. Click [Next].



4. Select "Search for the best driver for your device" and click [Next].



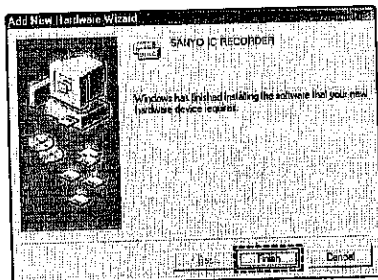
5. Select "CD-ROM drive" to search the driver, then click [Next].



6. Click [Next], then installation will be proceeded automatically.

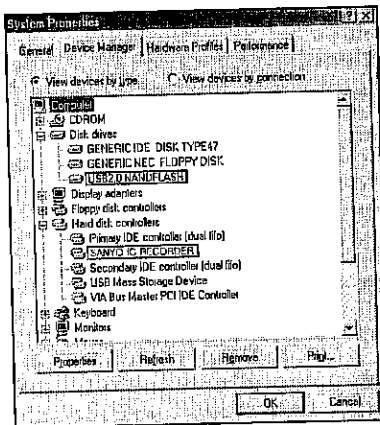
Installing the USB driver

7. When Windows finish installing the driver, click [Finish] to complete the installation process.

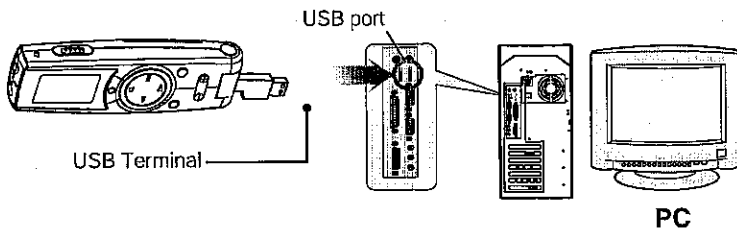


● How to check whether USB driver has installed correctly or not

1. [Start] menu > [Settings] > [Control Panel] > [System] > [System Properties] > Open [Device Manager] in tab.
2. Double click [Disk drives] > double click [Universal Serial Bus controllers].
If the following screen is displayed, it means USB driver has installed correctly.



Connecting the unit to your PC



Warning

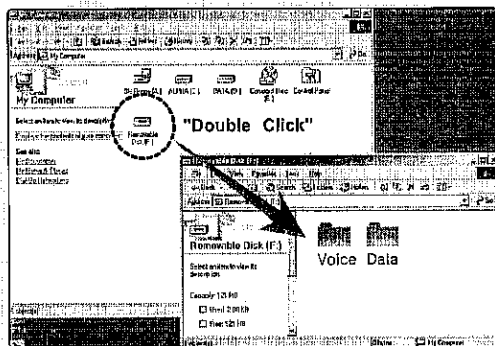
- ▶ Connect the USB to the PC after checking the shape of the player's USB connection terminal. If the USB is inserted in a wrong direction, the product or your PC can be damaged seriously.

Connecting the unit to your PC

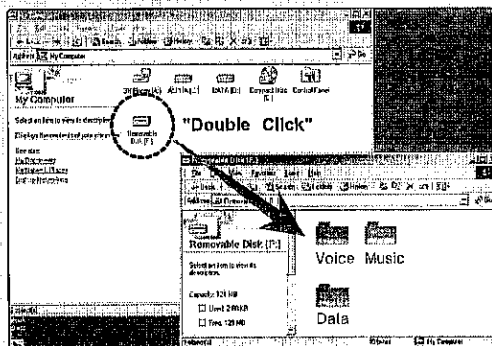
■ Down Load Files

- ▶ If you connect the Digital Voice Recorder to PC, "Removable Disk" is automatically recognized by PC and contents in the file can be shown.
- ▶ Copy music files to the window screen displayed Removable Disk.(ICR-A125M)

Note: Copy the music files from the PC to the "Music" folder directly, not the sub folder in the "Music" folder.(ICR-A125M)



<ICR-A120>



<ICR-A125M>

Cleaning the cabinet

Clean the outside of the unit with a clean soft cloth, moistened with lukewarm water. Do not use benzene, tinner or alcohol since they will mar the finish of the surfaces.

Specifications

Item	Specification
Model Name	ICR-A120/ ICR-A125M
Memory Capacity	128MB
Frequency response(over all)	40Hz - 3.5kHz(SP) , 40Hz - 5.1kHz(HQ)
* Music Playback capability	MP3(16-44.1kHz, 16-192kbps, VBR), WMA(16-44.1kHz, 32-160kbps)
Terminals	USB2.0 High Speed, Headphone, Microphone
Output power	80mw (Speaker)
Power source	DC 1.5V("AAA" battery x 1)
Dimensions(W x H x D)	Approx. 34 x 110 x 18.9mm
Weight	54g (Battery included)
Storage Media	Embedded Flash Memory
Accessories	CD-ROM(USB driver, Instruction manual), Quick guide

* Only available in ICR-A125M.

Product specifications and appearance are subject to change for product improvement without a prior notice.

This set complies with the EMC Directive 89/336 and with the LVD Directive 73/23.

SANYO
