

Software Updating Instruction

Tools: a. PC running Win XP with RS-232 port. b. RS-232 modem cable (9 pin D-Sub Serial cable)

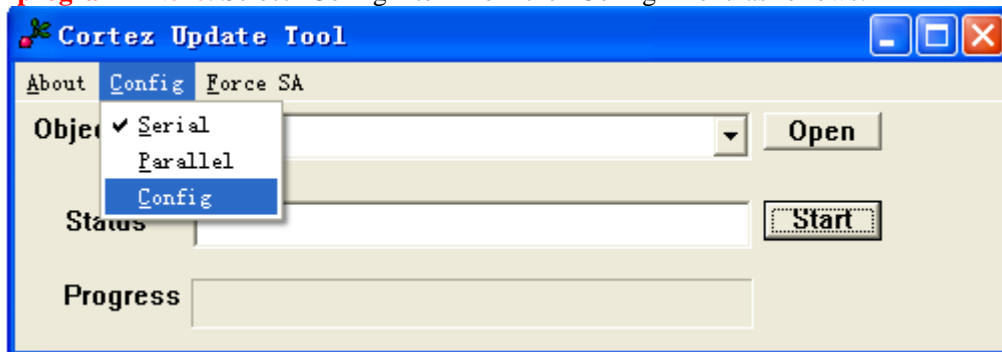
Procedures:

- 1) Install the software-updating program by executing Gprobe.exe.
- 2) Connect the TV to the PC by a serial cable (RS-232 cable).



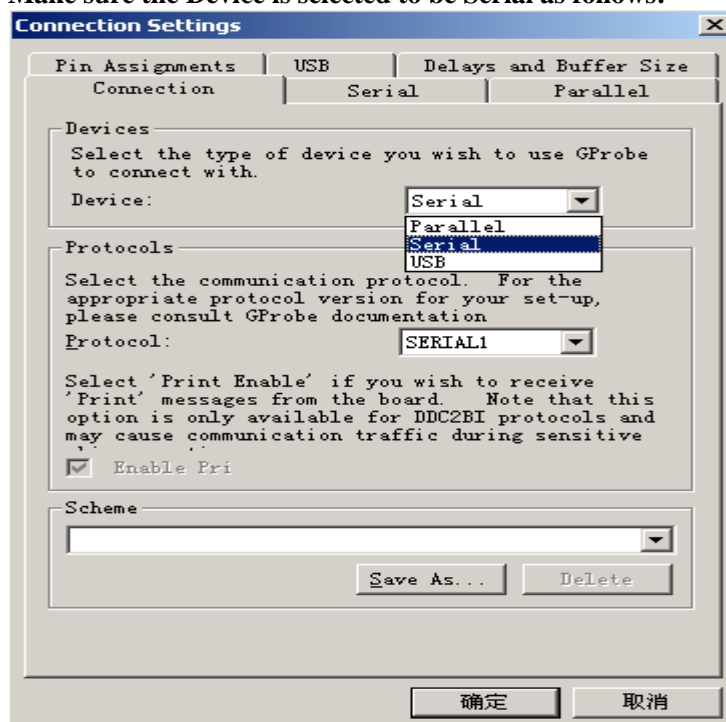
- 3) Make sure the files **FY.exe** and **isp_16_ext.hex** are in the same folder.

- 4) Make sure the **TV is not powered on (the Main switch is turned off), and then run the program FY.exe**. Select "Config" item from the "Config" menu as follows:

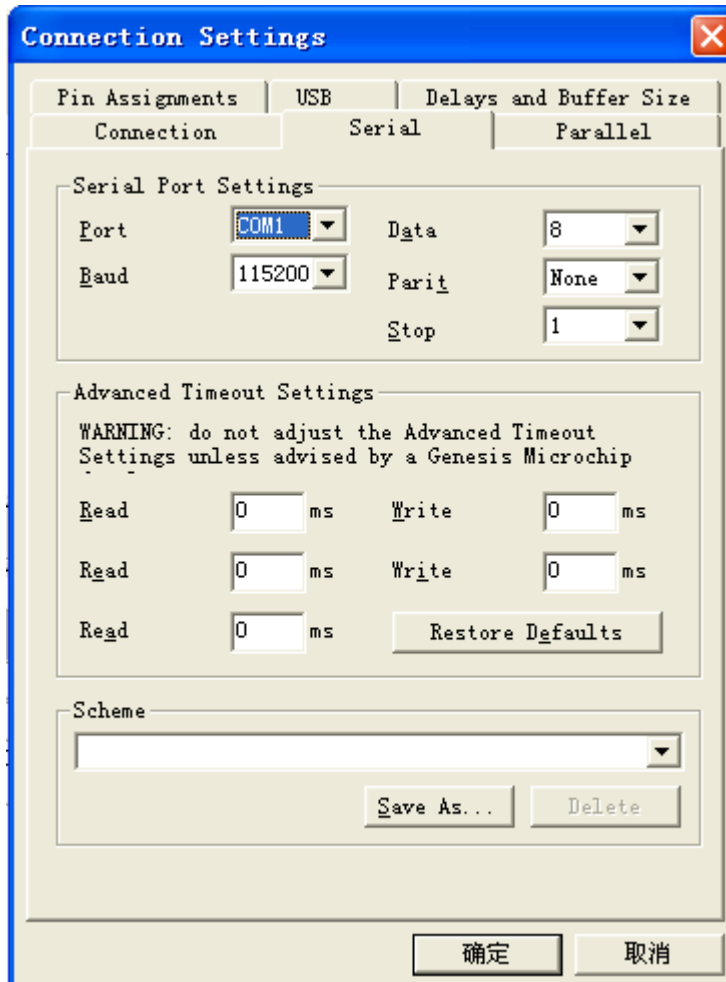


Make sure that the "Config" item in the "Config" menu has a checkmark next to it when finished setting!

Make sure the Device is selected to be Serial as follows:

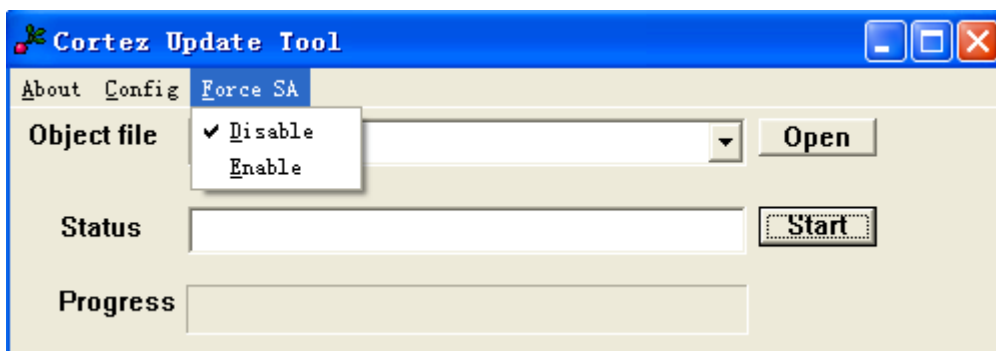


Set the “Serial Port Settings” to the COM port you have connected the TV. “Baud” to be set to 115200 “Data” to 8, “Parit” to None and “stop” to 1, as following picture:

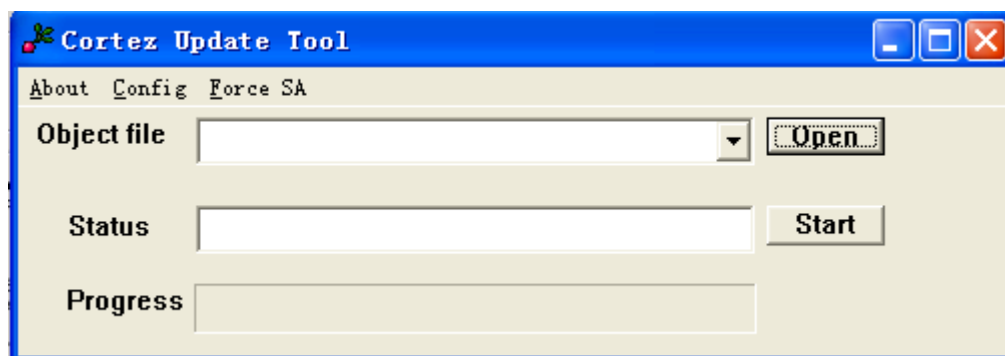


Next! Select the “Delays and Buffer Size” tab and set both delays to ~90 000ms.

4) Select Item “Disable” from the “Force SA” menu to be as follows:

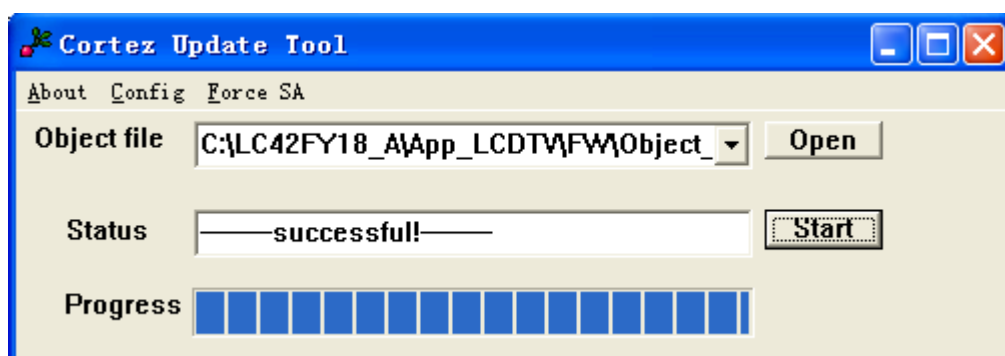


5) Click “Open” button and select the software data file to be updated.



Browse for the correct “HEX” file for the model. (fli8548_xoceco_board_ext.hex)

6) Turn on the TV. Press the buttons on the remote control: [Source] → [2] → [5] → [8] → [0] to enter the factory menu. Press button [1] to go to the first page of the factory menu, (Only for LCD47XR7: Select “RS232 Enable” item, and set it to “Off” by the left or right arrow button) Then click the “Start” button on the “Cortez Update Tool” to update the software. There is status indication for the updating. This will take about 5-10 minutes! **Do not close the FY.exe or power off the TV.**



After the update finished and the “Status” read “successful”, (Only for LCD47XR7: please go into the factory menu to set the RS232 to on, for the RS-232 control function to work.) Switch off the set by the main switch and switch it on again. This completes the software update.