



Microwave Oven

OPERATING INSTRUCTIONS

Model EM1207N

Read these instructions carefully before use.
If you follow the instructions, your Microwave Oven will serve you long and well.

How a Microwave Oven Makes Cooking Faster, Easier and Much More Enjoyable

1. A feast in minutes.

High energy microwaves penetrate the food and cook it quickly, evenly and efficiently.

2. Natural flavour.

Microwave cooking preserves the natural taste and nutritive value of the food to a much higher degree than conventional cooking methods.

3. Utensils.

Glassware, earthenware, paper containers and practically all utensils EXCEPT METAL ONES are perfectly suitable for microwave cooking.

4. Simplified operation.

You are cooking by time, and not by heat. Simply set the timer and push the 'START' button.

5. Clean, cool operation.

No smoke, no grease, no heat. Your kitchen stays cool and clean at all times.

6. Perfect for defrosting and re-heating.

When there is no time for natural thawing of frozen foods, your microwave oven can reduce the process to a matter of seconds. It defrosts all kinds of frozen foods and it re-heats fast.

7. Economical.

Since the required cooking time is extremely short, microwave cooking is more economical than conventional ovens.

The Extra Features of Your Sanyo Microwave Oven

1. Compact, light weight, easy to move.

Fits easily on a kitchen work surface. Can be installed practically anywhere. Light enough to be moved to a summer house or seaside cottage.

2. Six separate safety features.

- 1) Latch system: when the door release button is pushed, a built-in switch turns off the oven before the door is opened.
- 2) Door switch: when the door is opened this switch automatically turns off the oven.
- 3) Choke seal: a special seal around the door prevents all radiation leakage from the oven.
- 4) Radiation absorbent: this absorbent is made of durable ferrite rubber.
- 5) Thermal limiter: when the temperature of the magnetron rises above the limit, this switch automatically turns off all radiation.
- 6) Monitor switch: should the latch switch fail to function properly, this switch is activated to prevent microwave radiation.

3. Power Selector

By setting the selector knob, one of the power level either Cook or Defrost can be selected.

4. Simplified cooking.

Simply set the timer and push the 'START' button. Your oven does the rest, and a chime sounds when the food is ready.

5. High-visible viewing window

The progress of cooking can be observed while oven is operating.

6. Practical dimensions.

- 1) Overall: 49.0(W) x 36.7(D) x 32.5(H)cm
- 2) Oven: 29.4(W) x 29.6(D) x 16.5(H)cm

WARNING-This appliance must be earthed.

IMPORTANT

The wires in this mains lead are coloured in accordance with the following code:

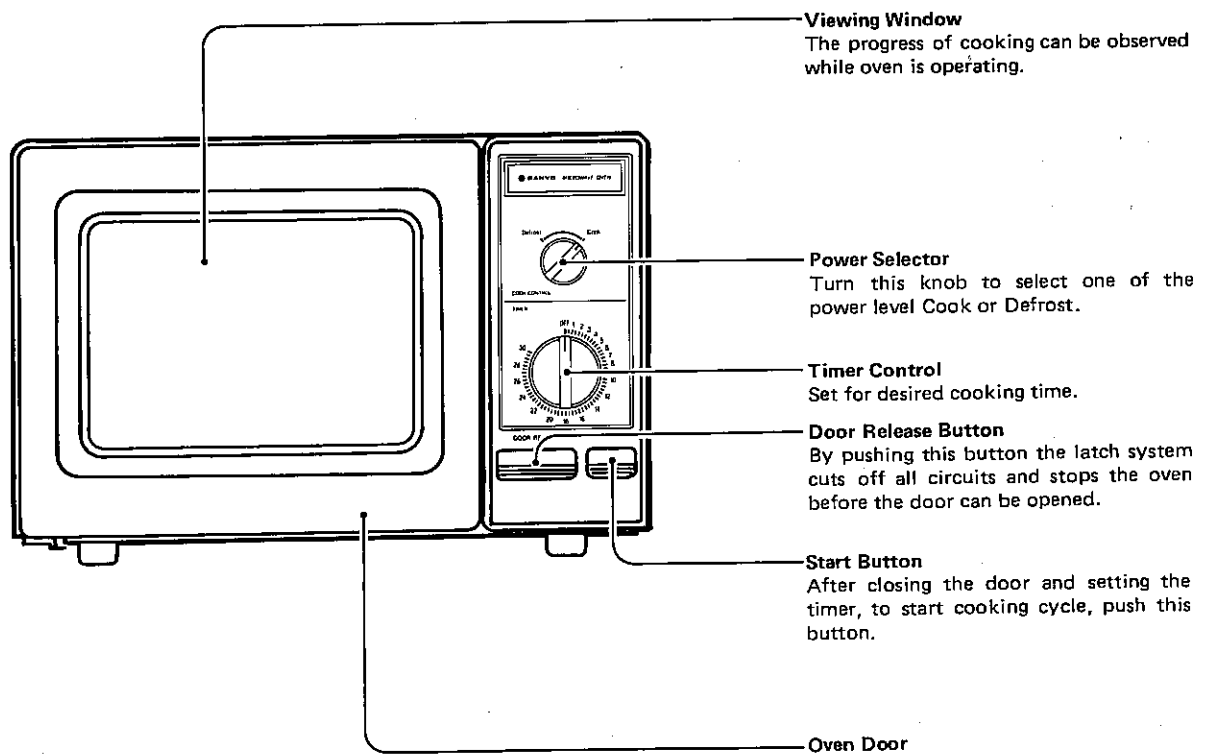
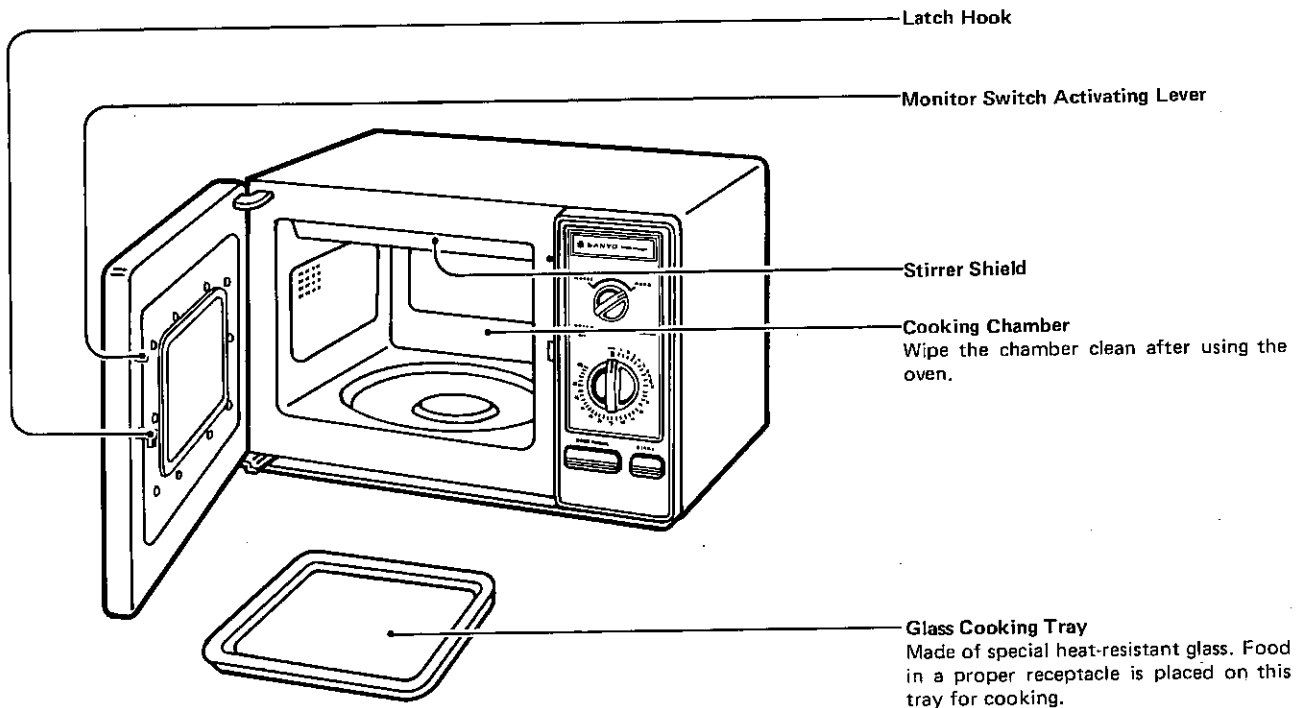
Green-and-yellow: Earth.
Blue: Neutral.
Brown: Live

As the colours of the wires in the mains lead of this appliance may not correspond with the coloured markings identifying the terminals in your plug, proceed as follows:

The wire which is coloured green-and-yellow must be connected to the terminal in the plug which is marked with the letter E or by the earth symbol \perp or coloured green or green-and-yellow.

The wire which is coloured blue must be connected to the terminal which is marked with the letter N or coloured black. The wire which is coloured brown must be connected to the terminal which is marked with the letter L or coloured red.

If You Know All About It, You'll Enjoy It More



How to use your Microwave Oven safely

Although your oven is provided with safety features, it is important to observe the following:

- a) It is important not to defeat or tamper with safety interlocks.
- b) Do not place any object between the oven front face and the door or allow residue to accumulate on sealing surfaces. Wipe the sealing area frequently with a mild detergent, rinse and wipe dry. Never use abrasive powders or pads.
- c) When opened, the door must not be subjected to strain, for example, a child hanging on an opened door or any load could cause the oven to fall forward to cause injury and also damage to the door.
Do not operate the oven if it is damaged, until it has been repaired by a qualified service engineer. It is particularly important that the oven close properly and that there is no damage to the:
 - i) Door (bent)
 - ii) Hinges and Latches (broken or loosened)
 - iii) Door seals and Sealing surfaces
- d) The oven should not be adjusted or repaired by anyone except properly qualified service engineer.

NOTE

It is quite normal for steam to be emitted around the door during the cooking cycle.

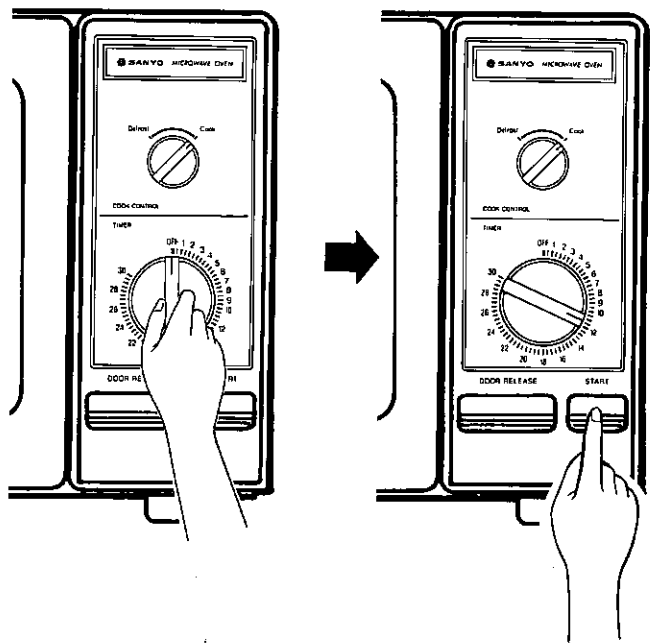
The door is not intended to seal the oven cavity completely but its special SANYO design contributes to the complete safety of the appliance.

WARNING

1. Do not heat food nor liquids in bottles or jars with lids on. Air must be allowed to escape from the container. Do not warm babies bottles in the microwave oven with screw top lids or teats in place.
2. Do not attempt to operate the oven while empty as this will cause damage.
3. As an exhaust is located in the rear of the oven, install the oven so as not to block the outlet.

How to operate your Microwave Oven.

1. Connect the mains lead to an electrical outlet.
2. After placing the food in a suitable receptacle, open the oven door and put it on the cooking tray.
3. Shut the oven door. Make sure that it is firmly closed.
4. Set the Power Selector to the desired power level either Cook or Defrost.
5. Set the timer control by turning the timer knob. When setting the timer to less than 2 minutes, first set the dial for a longer period, then return it to the desired reading.
6. Press the 'START' button. This will light up the interior lamp and start the cooking process.
7. When the cooking time is up, the time pointer reads 'OFF', the chime rings and heating stops. Push the door release button, open the door and take out the food.
8. To turn off the oven during cooking, simply open the oven door or turn the timer to off. Cooking time can be reset at any time during the cooking operation by turning the timer knob.
9. After use, be sure to return the timer to 'OFF'.
10. To prevent uneven heating, food can be rotated or turned up side down during cooking.



Taking Care of Your Microwave Oven

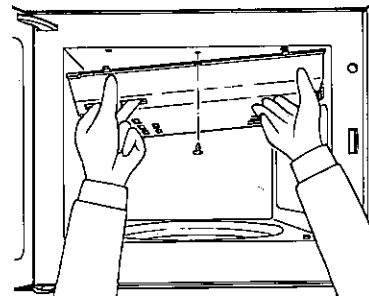
Wipe the oven inside and out with a mild detergent solution, rinse and wipe dry. This should be done on a weekly basis — more often if needed. Never use abrasive powders or pads.

REMOVABLE PARTS

- The cooking tray can be removed for cleaning at the sink. Wipe up excess of spillage with paper towel or cloth prior to removal of tray.
- The stirrer shield (inside oven top) can be gently wiped in place or removed for washing at the sink. It is held in the inside top of oven cavity by one plastic pin at the front and four shield tabs fitting into the slots at the rear and the front. To remove it, pull the shield down while you are pushing it backward. Be careful not to lose the plastic pin during removal.

Wash only in warm (not hot) detergent water, rinse and wipe dry. While stirrer cover is out of oven make sure to clean along the place where cover sits. Any food left in oven could possibly cause arcing due to carbonization.

Avoid hitting or bending the metal stirrer blades, as this could change the heating pattern in the oven. To replace the shield, position it in the top of oven cavity and retain it with the plastic pin in front.



Usable Cooking Utensils and Materials

OVENPROOF GLASS

Ovenware (treated for high-intensity heat), such as utility dishes, bread dishes, pie plates, cake plates, liquid measuring cups, casseroles and bowls without metallic decoration.

CHINA

Bowls, cups, serving pieces, plates and platters without metallic decoration.

POTTERY

Dishes, cups, mugs and bowls.

Utensils and Materials to Avoid

METAL UTENSILS

Metal utensils are not recommended because the metal shields the food from microwave energy on the bottom and sides, causing uneven cooking results. Metal utensils will also cause arcing and damage the appliance.

METAL DECORATION

Metal-trimmed or banded dinnerware, casseroles, etc., should not be used. The metal trim interferes with normal cooking and may damage the dish.

PLASTIC

Plastic wrap may be used as a cover. Lay the plastic wrap loosely over the dish and press it to the sides. The dish should be deep enough so that plastic wrap will not touch the food. As the food heats, it may cause the wrap to melt wherever it touches the food. Plastic dishes, cups, semi rigid freezer containers and plastic bags are usable for short cooking operations. Use with care as some softening of the plastic can occur with heat from the food.

ALUMINUM FOIL

Large sheets or pieces of aluminum foil should be avoided because they will disrupt cooking and may cause harmful arcing. However, smaller pieces may be used to cover areas such as poultry legs and wings. Any aluminum foil used should never be closer than 2.5cm (1 inch) from side walls of oven.

WOOD

Wooden bowls and boards will become dried out when used in the microwave oven and may split or crack.

OTHER

Avoid using cracked, flawed or defective utensils, including ovenproof glassware.

CAUTION: DO NOT USE METAL TIES ON ANY PAPER OR PLASTIC BAGS; THE TIES BECOME HOT AND COULD CAUSE A FIRE.

A Few Other Precautions

1. Arcing in the oven during operation usually occurs from use of metallic utensils or overuse of aluminum foil. Arcing is denoted by a "snapping" or "cracking" noise and may be accompanied by bright flashes. Continuous arcing can damage the unit. If continuous arcing occurs during operation, do not use the unit and call a service engineer.
2. Always make sure that closed containers, such as jars of baby food, are opened and plastic pouches of vegetable are pierced before cooking. Tightly closed containers could explode.
3. Do not cook eggs in their shells because they will explode. Puncture the membrane around the yolk before cooking eggs. This is because the yolks swells faster than the membrane and the egg explodes when heated quickly.

What to Do If Repairs Are Needed

Get in contact with your nearest Sanyo Service Centre. On no account remove or interfere with any parts or screws. "THIS COULD PROVE VERY DANGEROUS"

Make the following simple check-up before contacting the Sanyo Service Centre:

- If the interior lamp does not light when the 'START' button is pressed:
 1. Make sure that the mains lead is securely plugged in.
 2. Make sure that the door is properly closed.
 3. Make sure that the timer is not set at 'OFF'.
 4. Check the fuse or circuit breaker.
- If the lamp inside lights but the food is not heated:

Make sure that the food is not completely covered with a metal container.
- Noisy operation:
 1. Make sure that sparks are not being produced due to the use of metal utensils.
 2. Make absolutely sure that the contents of the oven are not touching the stirrer shield.



