

**SANYO ELECTRIC HAIR CURLER
OWNER'S MANUAL**



SANYO

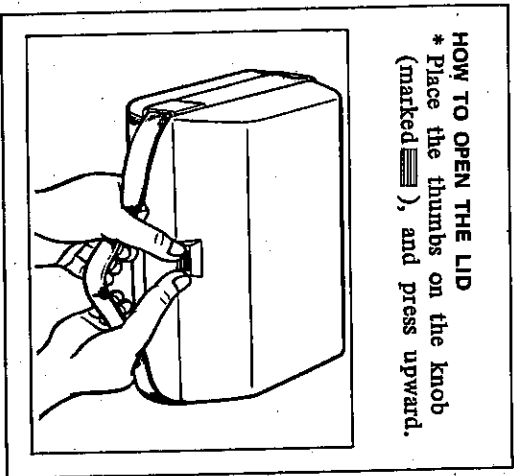
HCL-102

FEATURES

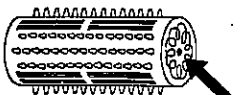
1. Before you go out, it gives you a beautiful set in the minimum of time. No more painful wire-and-sponge curlers.
2. Easy preparations: switch on, wait 6 or 7 minutes, and the curlers are ready to use. As with conventional curlers, simply take a section of hair and roll it up. You are free to do other jobs while your hair is being set.
3. Sanyo electric hair curlers do not work like direct contact curling irons. Instead, they wave the hair by heat preservation to form soft, beautiful waves without damaging the hair.
4. The curlers come in a light, beautifully designed carrying case which can be taken anywhere—on trips and outings.
5. The set of 20 curlers comprises small, medium and large sizes so that you can set your hair in different styles.
6. Complete safety in use is assured by three safety devices:
7. Various other special features contribute to easy use:
When the curlers reach the ideal temperature, the temperature-sensitive paint changes color. A pilot lamp indicates when current is flowing. Fitted with mirror.

INSTRUCTIONS FOR USE

1. First, open the lid.
2. Pull out the power cord and insert the plug into the power socket.
3. Press the main switch ON.



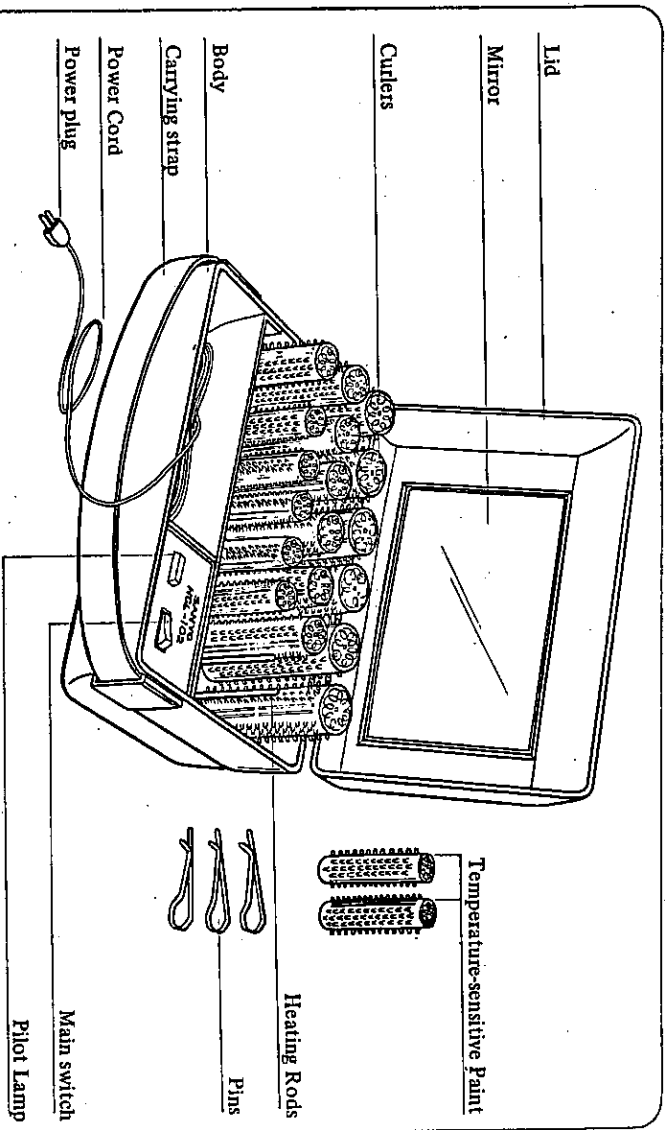
4. 6 or 7 minutes after the pilot lamp lights, the temperature-sensitive paint on the top of the curlers will change color from red to black. This indicates that the most suitable temperature for curling has been reached. (The length of time varies slightly according to the size of the curler and the room temperature.)



Temperature-sensitive paint

5. Take a section of hair and roll it around the curler. When using a curler, hold it by its spiky part.

NAMES OF PARTS



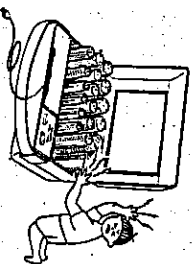
PRECAUTIONS FOR USE

1. Make sure that your hair is dry. If you have washed your hair, be sure to dry it thoroughly before applying the curlers.
2. Apply a little setting lotion before using the curlers. This will soften stiff hair and give body to soft hair, making it easy to roll the curlers.
3. Since the insides of the curlers get hot, be sure not to insert your fingers.
4. Do not apply hair spray, benzine or other volatile substances directly to the body of the case, as this may result in crackin and other damage.
5. Never apply heat directly to the curlers—i.e. from the fire, etc.
6. When the curlers have been placed in the hair, turn off the main switch.

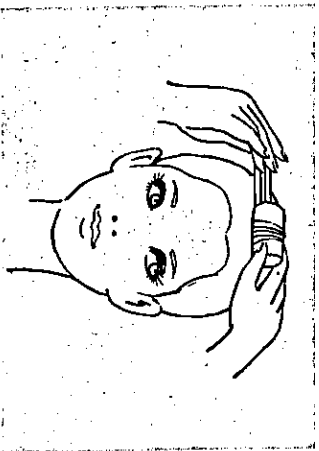
7. After use, do not close the lid until the heating rods have cooled. This takes about 10 minutes after the main switch is turned off.
8. The sponge inside the lid is for packing purposes only and may be thrown away.
9. Since the heating rods become quite hot, do not touch them with your hands.

PRECAUTIONS FOR CHILDREN

The heating rods get very hot. If you touch them directly with your hands, burns may result, therefore be especially sure that young children do not play with the curlers.

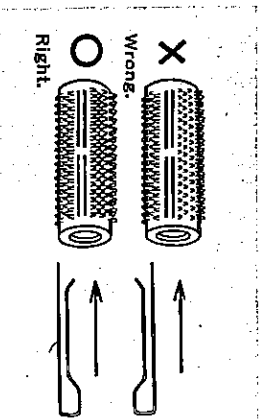


3. After the hair has been rolled around the curler, fix it in place with a pin. Press the pin open and insert it into the curler. Insert it as close to the scalp as possible. (If the pin is inserted near the base of the section of hair, the curler will be secured more tightly.)



4. When removing the curler from the hair, roll it out straight forward in the direction of the curl. If it is pulled sideways, the hair will get entangled and the curler become difficult to remove.

5. If the hair is slippery and difficult to roll up, apply a little hot or cold water, then comb and roll up again.
Inserting the pins
Place the bent side of the pin into the curler.



FOR A BEAUTIFUL SET WITH THE SANYO HAIR CURLER

Brushing

As well as making for a beautiful set, brushing helps to keep hair healthy and should never be neglected.

Therefore, while the curlers are heating up, brush your hair thoroughly.



Rolling up the curlers

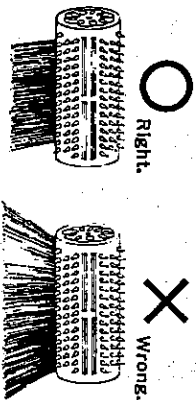
Roll the hair around the curlers in the same way as with conventional curlers. Be sure to roll the hair as tightly as possible. Use the curlers so that the side with the hole faces your right hand if you are right-handed, your left hand if you are left-handed. It is much easier to fix the pins in this way.

Arranging the hair.
Make sure the hair
is rolled at right-
angles to the desired
direction of the wave.

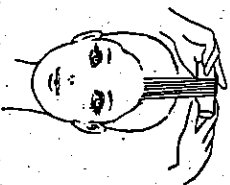


Rolling up the hair

1. Roll the end of the section of hair around the center of the curler. Then roll up the whole section using both hands. Be sure that no hair protrudes beyond the ends of the curler. The smaller the section of hair, the better the curl.



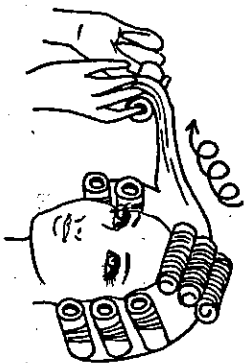
2. When using the curlers, stretch the hair as taut as possible to ensure that it is rolled tightly around the curler. In this way well formed waves are produced and the luster of the hair is brought out.



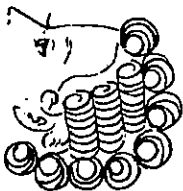
FINISHING THE SET

1. If the curlers are left in place for 5 or 6 minutes, beautiful curls are produced.

Take out the pins and unroll the curlers. When removing the curlers, roll them out slowly in the opposite direct on. Never try to drag them out.

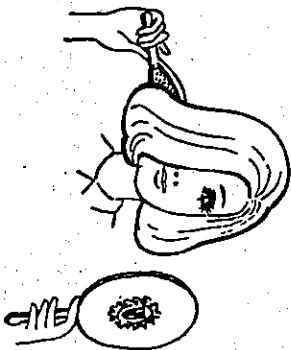


2. After removing the curlers, wait 2 or 3 minutes for the hair to cool. During this time the waves will set.



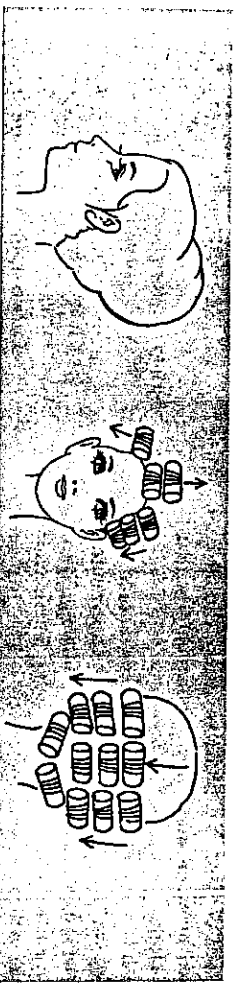
3. Finishing

Brush the hair carefully, then finish off the set in the style desired. If the same hair style is kept, the waves will hold their form well.



* Long style

Roll up the full length of hair from top to bottom, then comb out and brush into the desired style.



* Pin curls

For pin curls, use the small-size curlers. When setting short hair at the front and sides in pin curls, an attractive hair style can be produced in minutes with a Sanyo Hair Dryer.

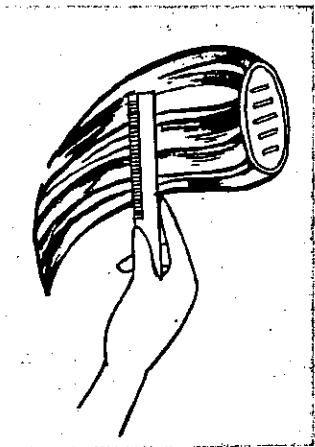
SPARE SANYO CURLERS

The 20 curlers included in the Sanyo Hair Curler are sufficient for most purposes. Should extra curlers be needed for special hair styles, spare Sanyo curlers are readily available at your dealer's.

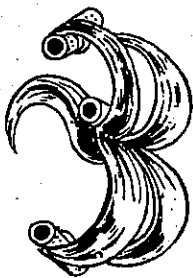
THE SANYO HAIR CURLER AND YOUR HAIRPIECE

It is generally thought that hairpieces are very difficult to treat at home. However, the Sanyo hair curler sets hairpieces easily without damaging the hair or requiring any shampoo. (This applies only to hairpieces made of human hair. The Sanyo hair curler may not be used with synthetic hairpieces.)

1. First comb out the hairpiece.



2. Separate the hairpiece into suitable sections and roll it up as explained previously.



3. Curls will form in 5 to 6 minutes.
4. To finish off the set, brush the hair lightly into the desired style.

A QUICK AND EASY SET IN THE COMFORT OF YOUR OWN HOME

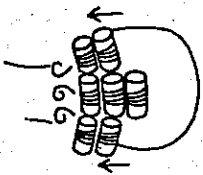
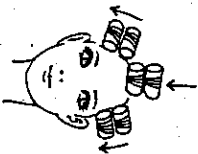
Below we give a few basic setting styles for your reference.

* Semi-long style (A)

A natural, bouncy style. Set 5 curlers down the left side and 2 down the other.

Roll the curlers inwards, and when finishing brush outwards.

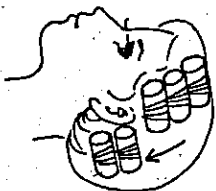
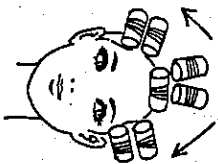
Set the back in the same way as for the short style below.



* Short style

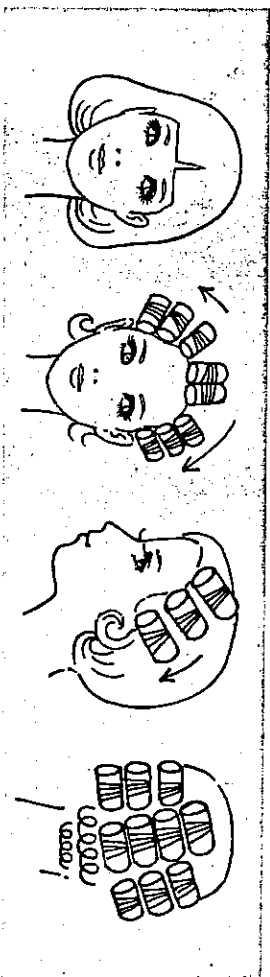
A cute style with the sides and back gently curled inwards.

Be sure to roll up the side curlers especially tight.



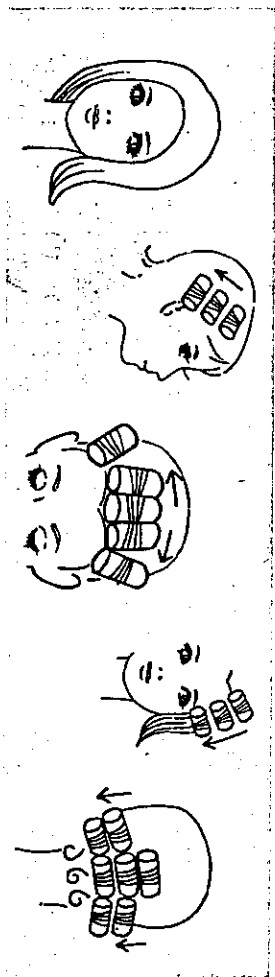
* Semi-long style (B)

Another natural style in which the sides and back fall gently and turn under in a slight curl.



* Semi-long style (C)

A sophisticated, no-parting style in which one side flips gently inwards while the other side and the back fall in a light wave. Roll the curlers inwards, then brush outwards to finish.



CARE OF YOUR SANYO HAIR CURLER

1. If the curlers or pins become dirty, they should be cleaned with a neutral cleansing agent. They may be completely immersed in the cleanser without damage, but afterwards they should be rinsed in water and wiped thoroughly with a dry cloth.
2. The lid or body become dirty, they should be wiped with a damp cloth to which a neutral cleansing agent has been applied and then polished with a dry cloth. In this way the Sanyo Hair Curler will give years of service. The use of benzene and other volatile substance should be avoided as they will attack the plastic parts of the Hair Curler.

SPECIFICATIONS

Dimensions (mm)

116 (h) x 232 (w) x 154 (d)

Weight

2.1 kg (inc. accessories)

Safety devices

Main switch.

Automatic temperature control mechanism.

Heat fuse.

Accessories

Curlers (20)

LL size (34mm ϕ) (6)

M size (28mm ϕ) (9)

S size (22mm ϕ) (5)

Pins (22)