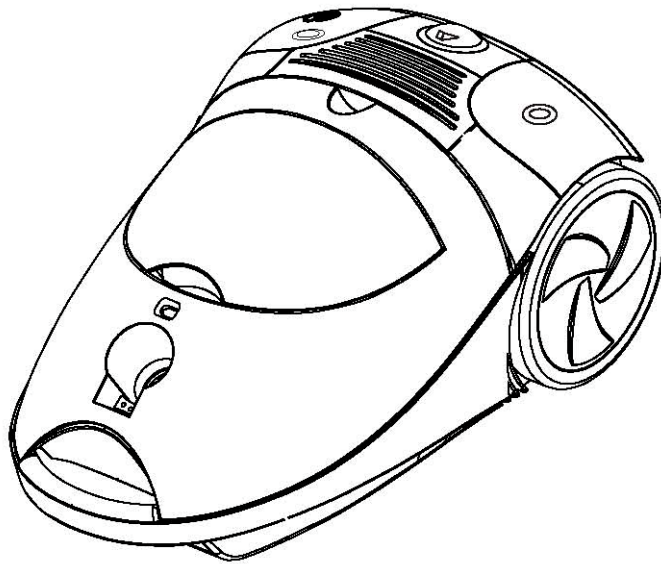


---

# **Vacuum Cleaner Instruction Manual**

**Model: SC184R**



**Please Read The Instruction Manual Carefully Before Use  
Save these instructions**

## **CONTENT**

Important Safeguards.....	1
Parts name and operation instruction.....	2
Dustbag.....	4
Maintenance of the filter.....	5
Technical Specification.....	6

## Important safeguards

When using an electrical appliance, basic precautions should always be followed, including the following.

### READ ALL INSTRUCTIONS BEFORE USING THIS VACUUM CLEANER

**WARNING** – to reduce the risk of fire, electric shock or injury:

1. Do not leave the vacuum cleaner when plugged in. Unplug it from the outlet when not in use and before servicing.
2. Do not use outdoors or on wet surfaces.
3. Do not allow it to be used as a toy. Close attention is necessary when used by or near children or infirmed persons.
4. Use only as described in this manual. Use only the manufacture's recommended attachments.
5. Do not use with a damaged cord or plug. If the vacuum cleaner is not working as it should, or if it has been dropped, damaged, left outdoors or dropped into water, return it to a service centre.
6. Do not pull or carry by the cord, use the cord as a handle, close a door on the cord, or pull the cord around sharp edges or corners. Do not run the vacuum cleaner over the cord. Keep the cord away from heated surfaces.
7. Do not unplug by pulling on the cord. To unplug, grasp the plug, not the cord.
8. Do not handle the plug or the vacuum cleaner with wet hands.
9. Do not put objects into the openings. Do not use with any openings blocked: keep free of dust, lint, hair and anything that may reduce air flow.
10. Keep hair, loose clothing, fingers and all the parts of your body away from openings and moving parts.
11. Do not pick up anything that is burning or smoking, such as cigarettes, matches or hot ashes.
12. Do not use without dust compartment and/or filters in place.
13. Turn off all controls before unplugging.
14. Use extra care when cleaning on stairs.
15. Do not use to pick up flammable or combustible liquids such as gasoline, or use in areas where they may be present.
16. Do not place any heavy items on top of the vacuum cleaner.
17. Do not step on the hose or pull it too strongly.
18. Do not pick up items such as pieces of waste paper or cloth which look as though they may cause the hose to become blocked.
19. Do not clean or store the vacuum cleaner in places where there are high temperatures.
20. Store the vacuum cleaner away from excessive humidity.
21. When carrying the vacuum cleaner, hold it by the carrying handle.
22. Before servicing the vacuum cleaner, allow all metal parts to cool first.
23. If the supply cord of this appliance is damaged, it must only be replaced by a service centre appointed by the manufacturer, because special purpose tools are required.

Parts name and how to use:



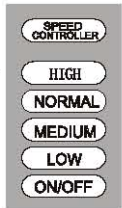
Accessory housing  
Used for storing accessories like the crevice tool, upholstery brush.



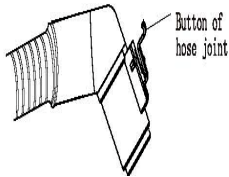
Crevice tool  
Used for cleaning gaps, corners, weatherboarding and between cushions.



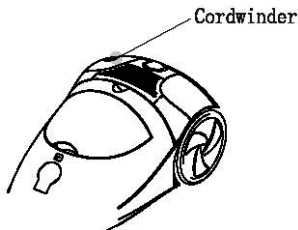
Upholstery brush  
Used for cleaning sofa, curtain or dust on the decorating surfaces.



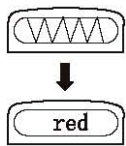
Speed controller  
You may switch ON/OFF the appliance and adjust the suction power steplessly by sliding the knob along the speed controller.



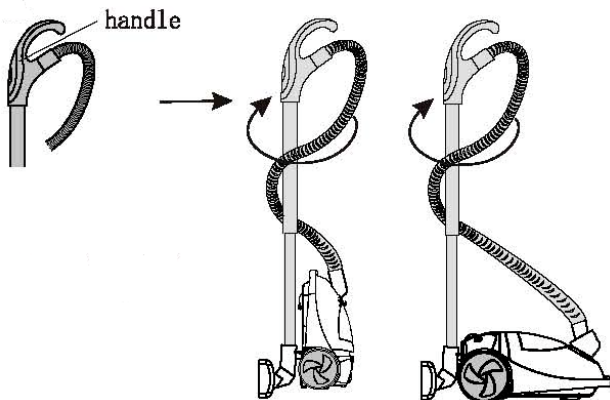
Connection between hose and cleaner body  
Push the hose connector's flange into the air inlet of the appliance firmly until it is locked by the hose connector's button. When disconnecting the hose, press the hose connector button and pull the hose out.



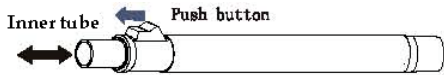
Power cord winding  
Please take care when retracting the cord. Pull the plug out of the socket, hold the plug and press the cord winder knob.



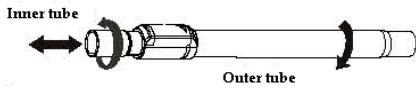
Dust indicator  
When the dust indicator turns red, it maybe caused by:  
A: air is blocked, you should check the appliance; B: the dustbag is full, you should replace the paper dustbag or empty the cloth dustbag.



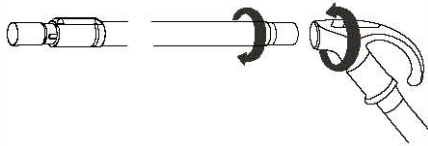
Storage:  
Hold the handgrip and rotate it clockwise to wrap the hose around the hard tube.  
Put the brush holder into the upper hole of the main body.



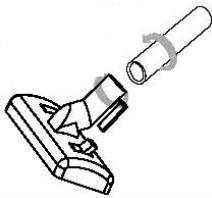
Button-push type extension tube. Push the button as in the drawing indicated. Move the inner tube to get the length you need, release the button.



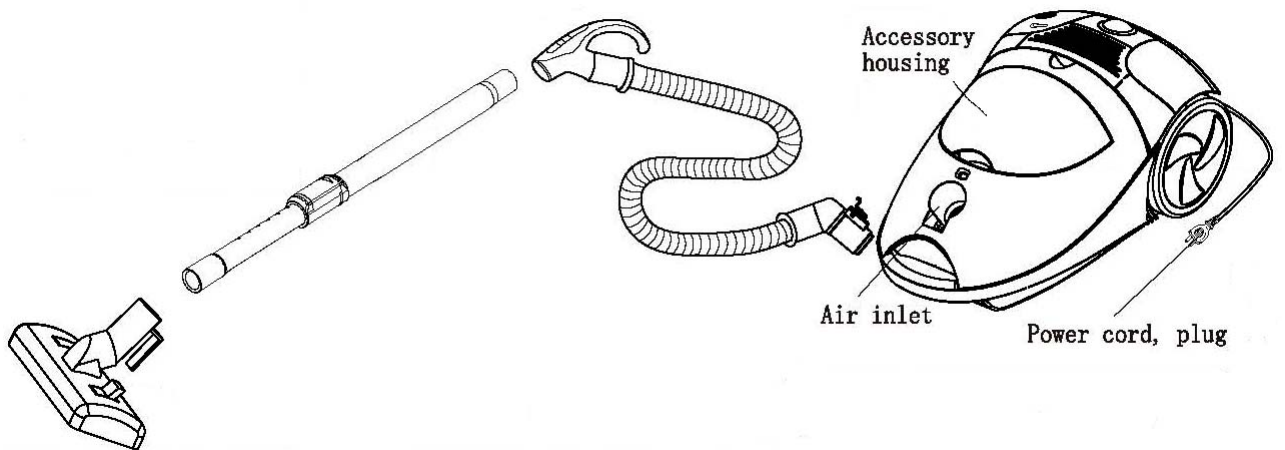
Rotation type extension tube. Loosen the tube clamp and extend the tube to the required length retighten the tube clamp



When connecting please rotate them so that they can fit tightly together.

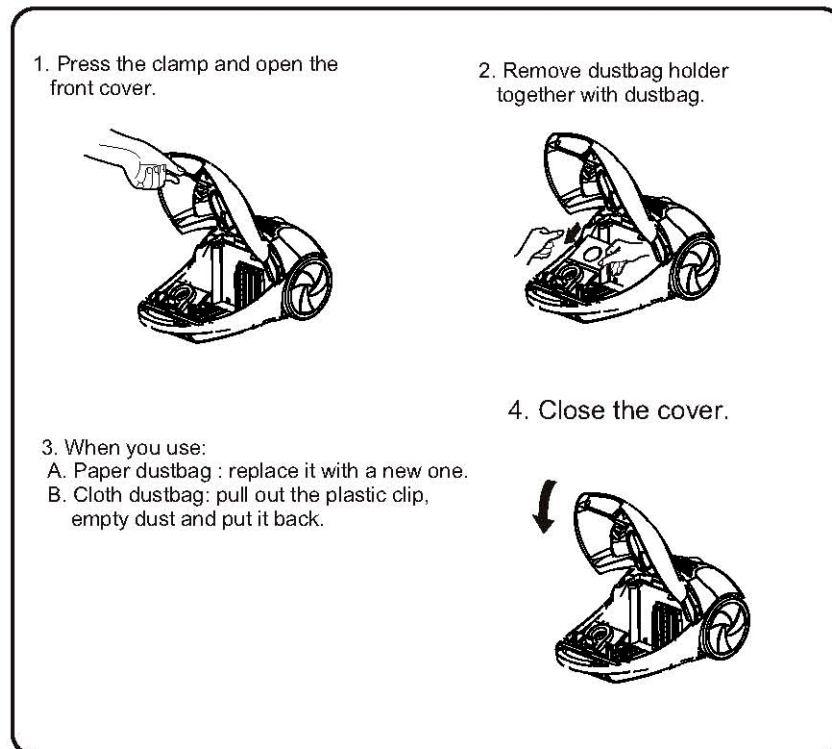


Carpet-floor nozzle  
When connection please rotate them so that they can fit tightly together.



## Dustbag

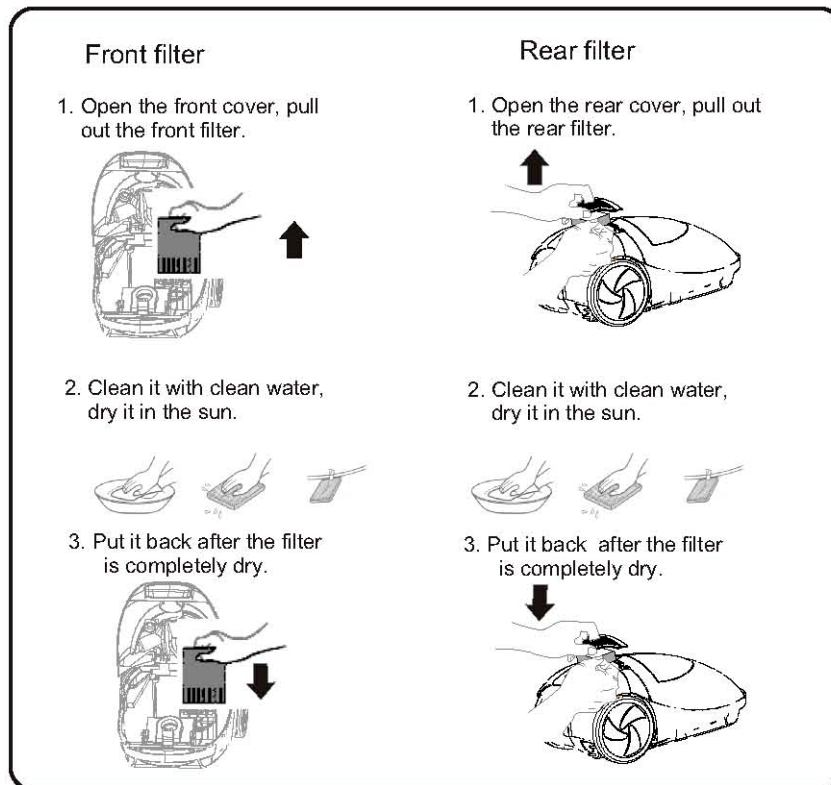
1. Never use the appliance without dustbag.
2. Replace the dustbag once it is damaged.
3. Clean cloth dustbag termly to assure long life.
4. Switch the appliance OFF before replace dust bag.



Note: It is impossible to close the cover when no dustbag inserted.

## Maintenance of the filter

1. Clean the filter more than two times one year. It shall be cleaned when visible dust appears.
2. Switch the appliance OFF and pull out the plug from the socket before replacing the filter.



### Caution:

1. Never use this appliance without filter.
2. Never clean the filter with washing machine, never dry it with hair dryer.

## Technical Specification

Model number	SC184R
Suction Power	24kPa
Noise	=< 78dB(A)
Voltage	AC230-240V~50Hz
Max Power	1800W
Power Control	On Handgrip
Dustbag Capacity	5L