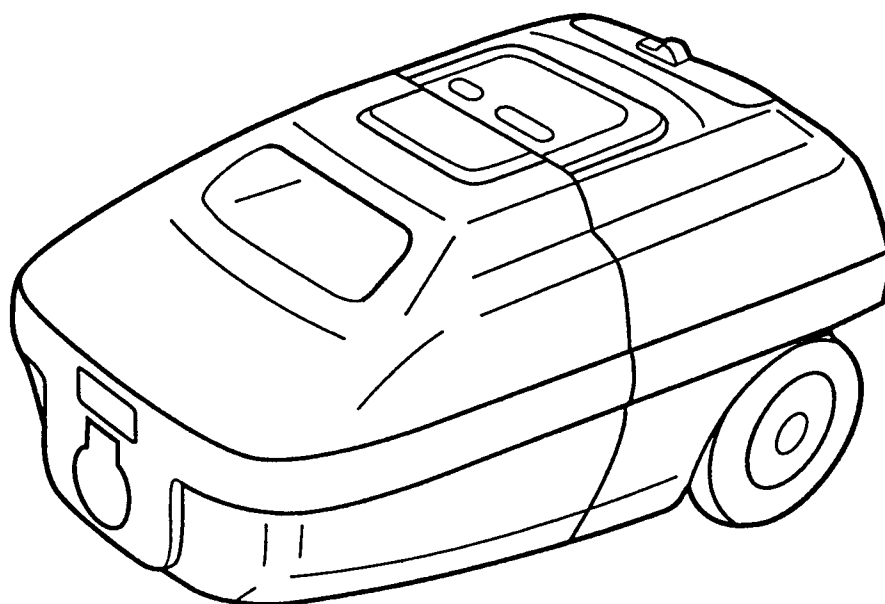


INSTRUCTION
MANUAL

SANYO

505/555/575 SERIES

VACUUM CLEANER



Thank you for your purchase of the Vacuum Cleaner.
Please read these instructions carefully before using.

A FEW PRECAUTIONS

1. Operating without the filter in place will allow dust to enter the motor and could damage the vacuum cleaner.
2. Keep the vacuum cleaner away from stoves and other heat sources. Heat can deform and discolor the plastic parts of the unit.
3. Keep the vacuum cleaner free of insecticides. Do not wipe with benzine, thinner, petrol or other oils which might cause discoloration or cracking. To clean the body and hose, dampen a cloth with a mild detergent and wipe clean.
4. Blocking the suction inlet or allowing the dust to clog the hose will decrease the efficiency of the motor.
5. Be sure not to push the clamp button while carrying the vacuum cleaner.
6. Never try to vacuum the following objects. They may damage the unit or cause a fire.
 - *Wet things, mud, soil, and fluids
 - *Burning cigarettes
 - *Needles and razor blades
 - *Inflammable materials such as gasoline and thinner
7. The following kinds of treatment shorten hose life:
 - *Bending hose at an acute angle when storing
 - *Pulling the hose with excessive force
 - *Placing heavy objects on, or stepping on the hose
8. Pull out the plug from the power source after use. Grasp the plug – not the cord – when pulling out the plug. Pulling on the cord may lead to shortcircuiting.
9. Long and continuous use causes the exhaust air and the body of the vacuum cleaner to become warm. This, however, does not denote malfunction.
10. When vacuuming vinyl mats which may stick to the floor nozzle because of the suction, lift up the rear of the floor nozzle slightly by moving the wands close to a vertical position.
11. When vacuuming places that are very dusty, and also when vacuuming regularly, empty the dust compartment before it becomes completely filled. Frequent emptying lengthens the life of the motor and maintains strong suction power.

CARE AND MAINTENANCE

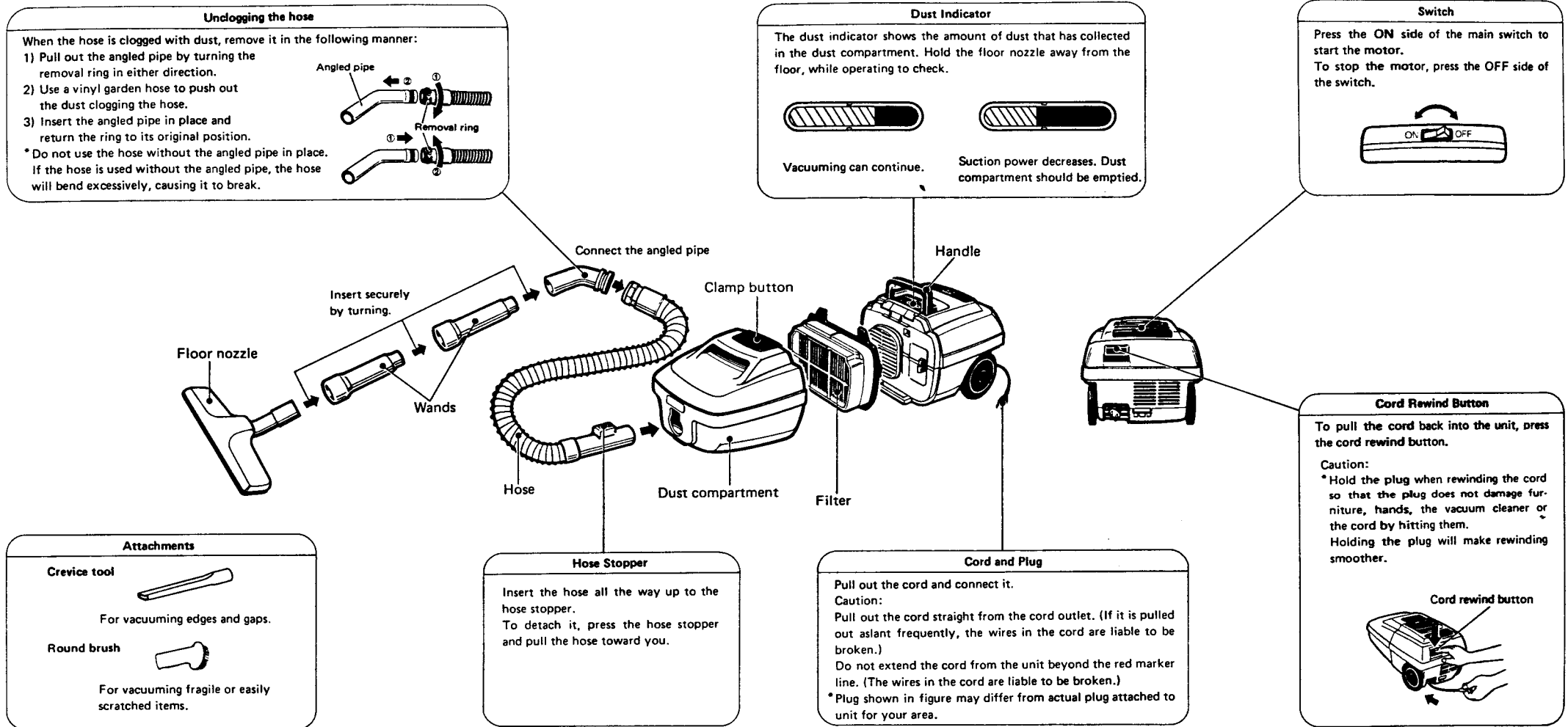
When you have trouble with the unit, inspect it according to the points in the "Trouble-Shooting Guide" If inspection indicates a malfunction, refrain from using the unit to avoid damage, and see your dealer or the nearest Service Centre.

Trouble-Shooting Guide	
Symptom	Items to inspect
Suction does not get stronger after cleaning out the dirt.(Weak suction)	<ul style="list-style-type: none"> ● Is the filter dirty? Clean the filter. ● Is the floor nozzle or the hose clogged with a large object? Push it out with a garden hose.
Motor does not run continuously.(Motor starts and stops)	<ul style="list-style-type: none"> ● Is the cord damaged where it is connected to the plug, or are you pulling on the cord too hard or bending it. Change the cord.
The cord does not go back fully into the unit.	<ul style="list-style-type: none"> ● Is the cord twisted or wound uneven on the roller? Pull the cord out 1-2m and try rewinding it again.

(For Special area only)

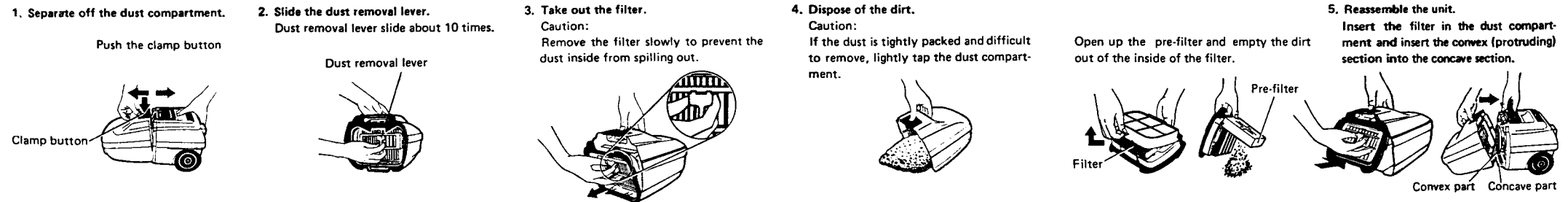
If the supply cord of this appliance is damaged, it must only be replaced by a repair shop appointed by the manufacturer, because special purpose tool are required.

NAME AND FUNCTION OF PARTS (Assemble as indicated in the center illustration.)



DUST DISPOSAL

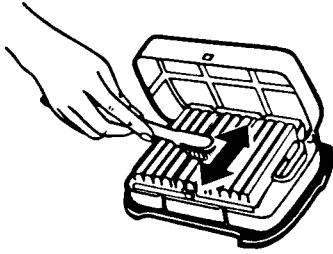
When there is a reduction in suction power, after press the OFF side of the switch, disconnect the hose and proceed as follows:



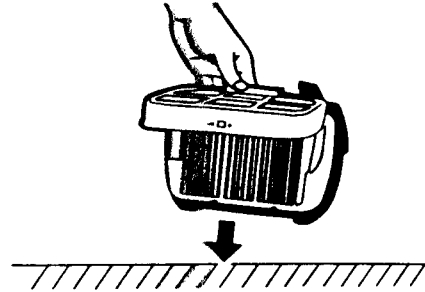
FILTER CARE

When the suction power is weak even if the dust is discarded, clean the filter.

1. Clean the filter.



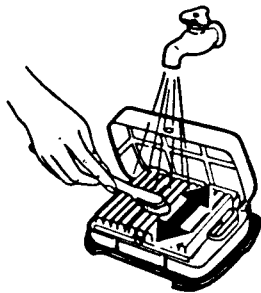
2. Lightly tap the filter.



If you are concerned about dirt on the filter: _____

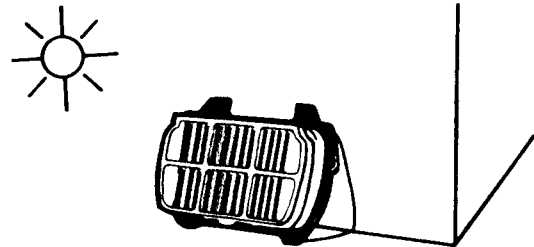
1. Wash with water.

If the dirt doesn't wash off easily, use a brush to get.



2. Dry thoroughly in a shady place.

CAUTION: Do not dry in direct sunlight or by the heat given off by an open flame.



SANYO