

SANYO

SANYO Australia Pty Ltd

CONSUMER ELECTRONICS DIVISION

TECHNICAL BULLETIN No. 80 DATE: 16/01/09

SUBJECT: Temporary Fix of LCD32XR8DA Hum

Fault:

Hum at low volume (volume level “3” or “4”) and in quiet periods in sound.

Cause:

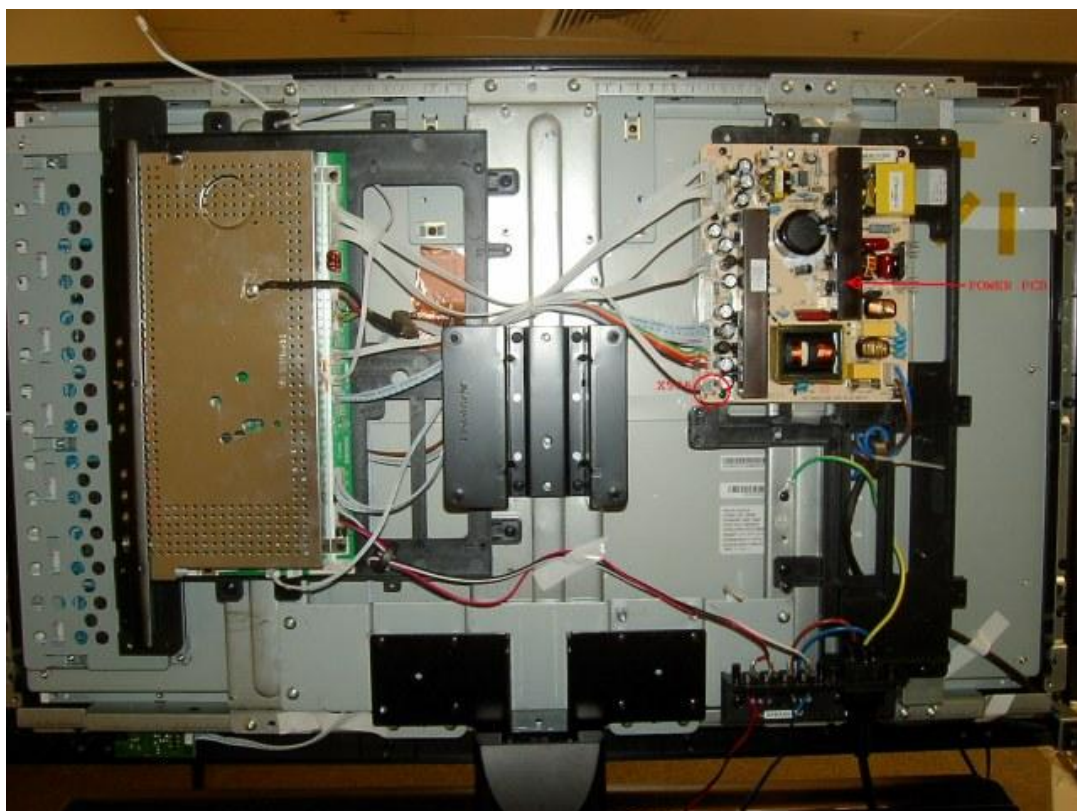
Backlight (inverter) circuit generates ripple on 24V supply line, due to incorrect PWM voltage level.

Remedy:

Increase PWM voltage level by disconnecting pin 2 (middle pin) of **X506** on **Power Supply** PCB.

Method:

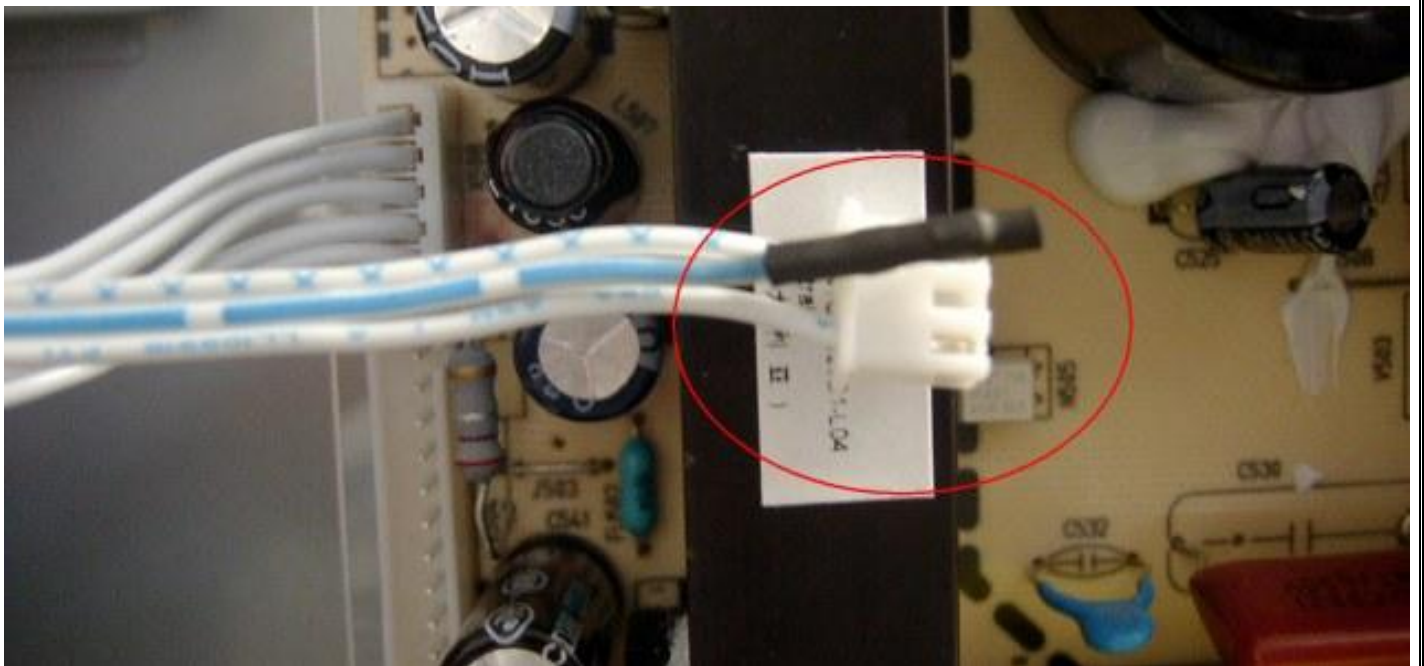
Remove middle pin from **X506** connector and insulate the exposed metal with heat- shrink tubing or electrical tape. (In future, pin might need to be reconnected.)



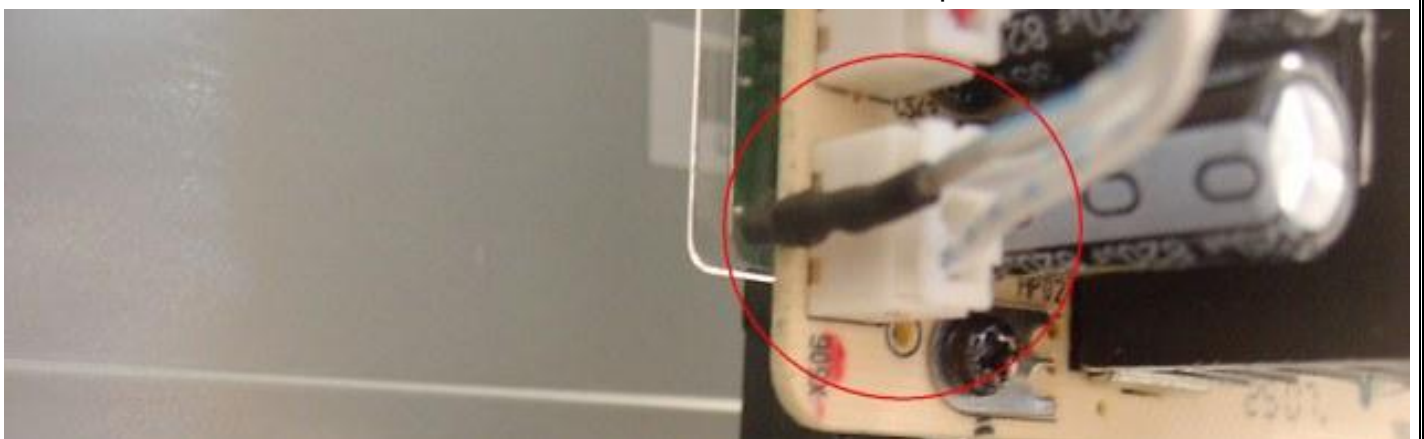
Location of Power PCB



Location of X506



Removal and Insulation of the Middle pin



Reconnection of X506