

Spare Parts Notice

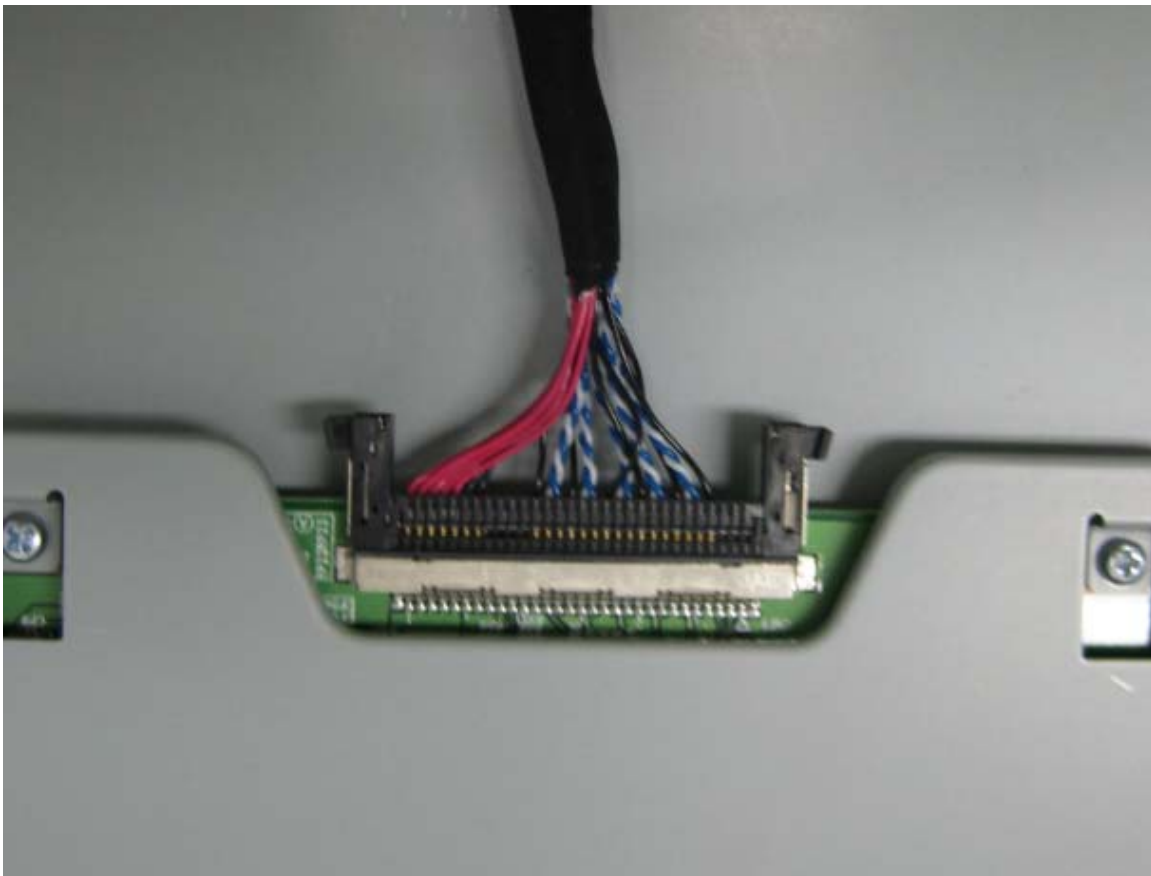
AWA LC-32G78 LCD TV Part Identification

Panel – L04 type

Label



LDVS connector at the matrix board on panel

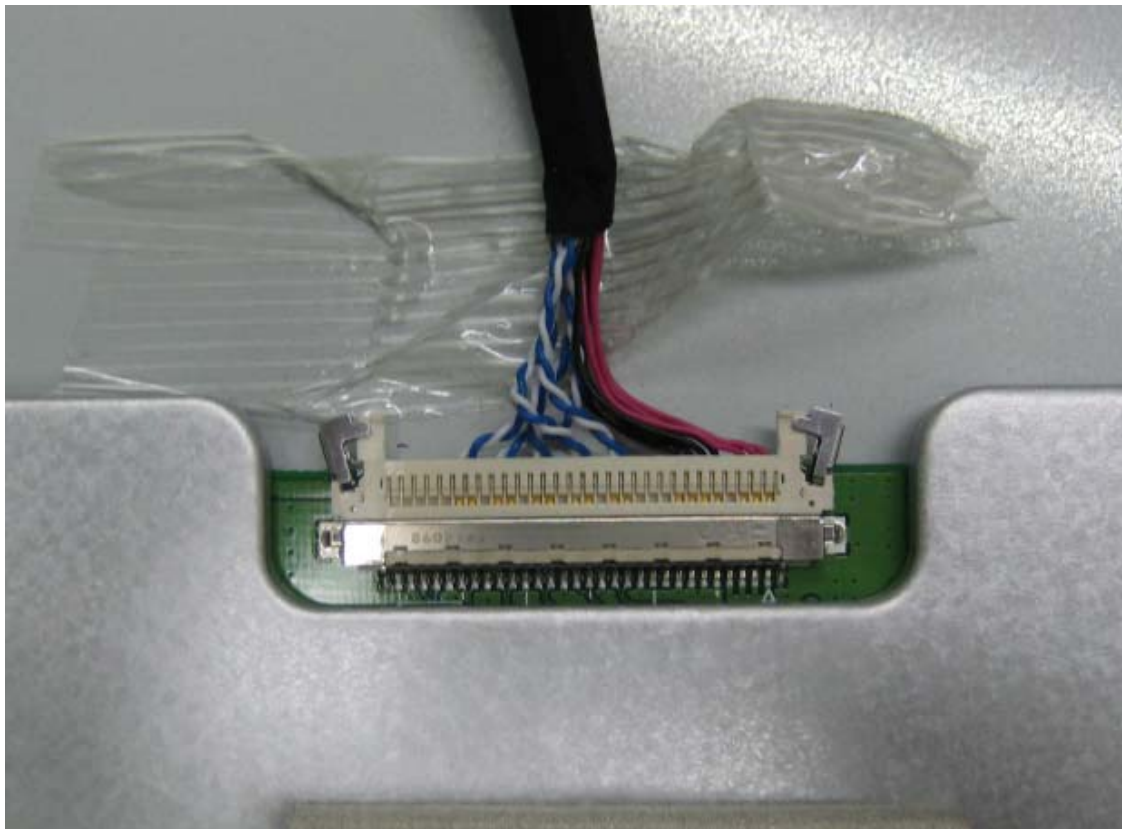


Panel – L05 type

Label



LDVS connector at the matrix board on panel

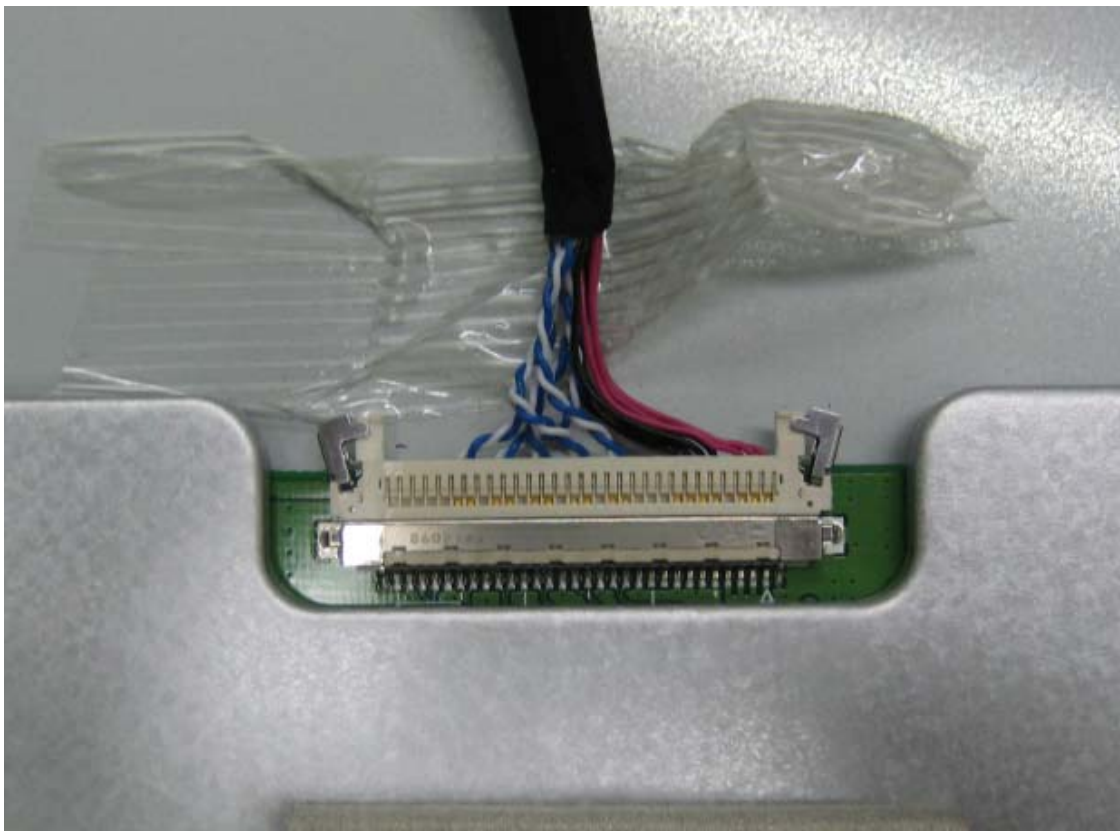


Panel – L08 type

Label



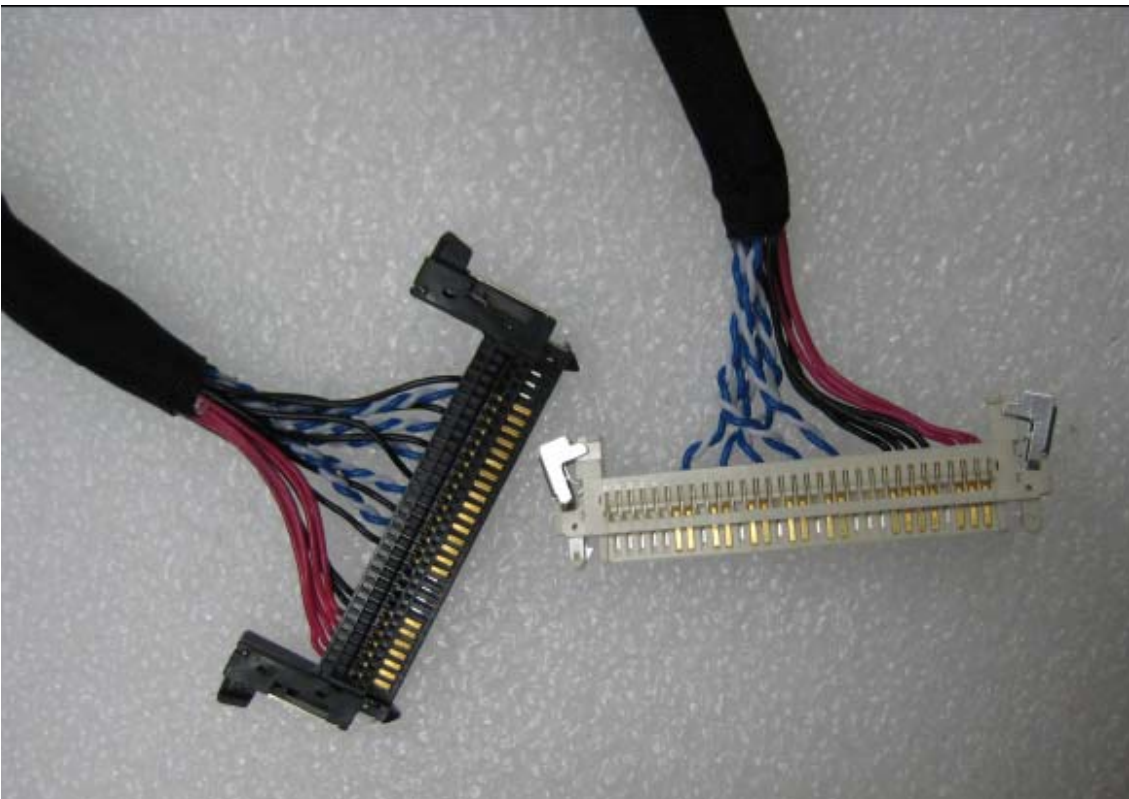
LDVS connector at the matrix board on panel



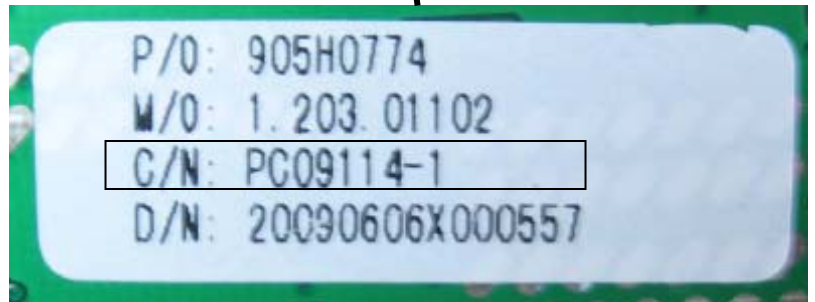
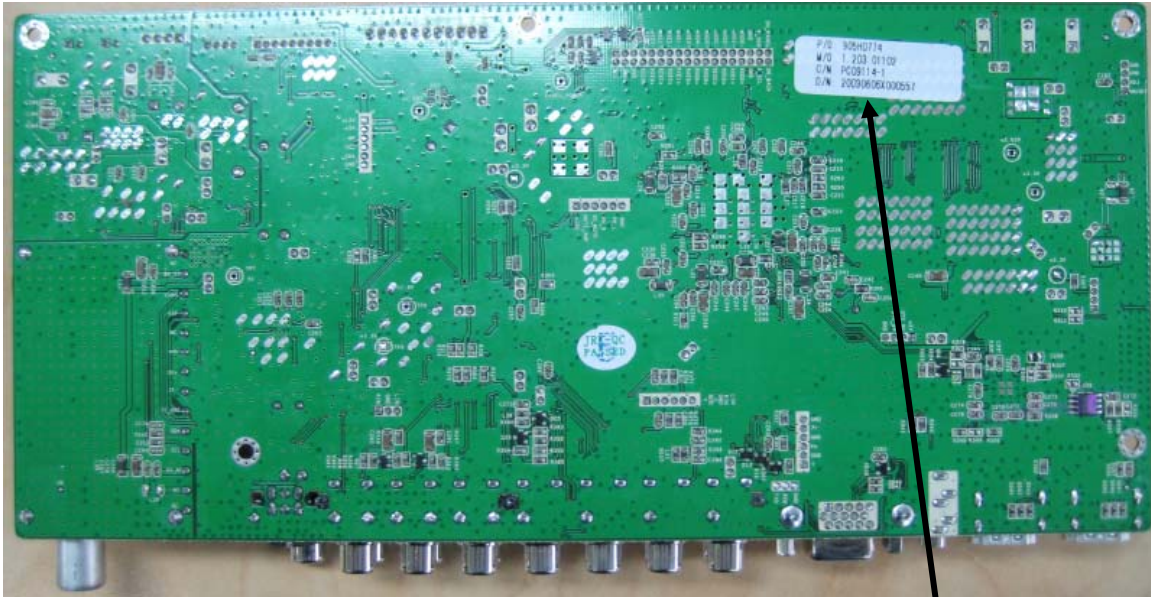
LDVS Cable



Panel end at the matrix board (Black = L04 and White = L05 / L08)



Main board identification



Main boards for panel types are identified by the [C/N] serial number that is located on the underside and printed on a white label as shown above.

1. For panel type V315B3-L04 → PC09114-1
2. For panel type V315B1-L08 → PC09114-2
3. For panel type V315B3-L05 → PC09114-3

Existing units manufactured can be identified by their serial numbers that is printed on the back cover of the TV.

Serial number range is either LC32G78200906090xxxx or C32G78200906100xxxx
Refer to the last four digits for identification

1. For panel V315B3-L04: serial number range 0001~1000
2. For panel V315B1-L08: serial number range 1001~2200
3. For panel V315B3-L05: serial number range 2201~2529