



Sanyo Software Pack 6.3 For Digital Cameras

INSTRUCTION MANUAL

Please read these instructions carefully before using. Be sure to keep this manual for later reference.

ATTENTION

Regarding permission to use the CD-ROM

- This CD-ROM may not be reproduced without permission.
- When installing the software in this CD-ROM, permission is granted for its use only if the user agrees to the terms and conditions that are displayed at the start of installation.
- Regarding products by other manufacturers that are specified on this CD-ROM, and for service, please inquire of the respective manufacturer.
- It is strictly forbidden to copy this manual, whole or in part, without prior written permission.
- The contents of this manual are subject to change without prior notice.
- Sanyo Electric shall not be held responsible for any problems resulting from the use of this product.
- Sanyo Electric declines all responsibility for damages due to improper use of this product, failure to adhere to the instructions given in this manual, or repairs or changes done by those other than a technician authorized by the manufacturer.
- Sanyo Electric shall not be held responsible for any damage caused by optional devices or consumable items used with this product other than those supplied with this product or those specified by Sanyo Electric.
- Sanyo Electric shall not be held responsible for any losses or loss of revenue resulting from the loss of data caused by the malfunction, or the repairing of a malfunction, of this product.

COPYRIGHTS

This manual and the software are copyrighted materials from Sanyo Electric Co., Ltd.

PowerPC is a registered trademark of International Business Machines Corp. (USA)

Macintosh and QuickTime are registered trademarks of Apple Computer, Inc. in the USA and other countries.

Microsoft and Windows is a registered trademark of Microsoft Corporation in the USA and other countries.

DirectX is a registered trademark of Microsoft Corporation in the USA and other countries.

Intel and Pentium are registered trademarks of Intel Corporation (USA)

All other brand or product names mentioned in this manual are trademarks or registered trademarks of their respective companies.

CONTENTS

■ INTRODUCTION

About this manual	4
The software	5
Directory map	6

■ OPERATING ENVIRONMENT

Operating systems	7
Hardware requirements	8

■ MOUNTING AND DISMOUNTING YOUR DIGITAL CAMERA

For WINDOWS XP users	10
For WINDOWS ME and WINDOWS 2000 users	13
For WINDOWS 98/WINDOWS 98SE users	16
For MAC OS9.xx users	20
For MAC OSX users	21

■ INSTALLING THE APPLICATION SOFTWARE

Windows	23
Macintosh	26

■ USING THE REAL COLOR EQUALIZER

Running and closing the Real Color Equalizer	29
Loading the image data and settings data	31
Adjusting the colors	33
Save	39

■ USING AS A PC CAMERA

42

INTRODUCTION

This manual describes how to install and operate the CD-ROM (Sanyo Software Pack) provided with the VPC-AZ3 digital camera. Please read this manual carefully, in order to use the images and audio recordings captured with your digital camera in a wide range of applications.

About this manual

This explanations in this manual conform to the following conventions.

- The examples given in this manual are generally based on a Windows environment. For Macintosh users, while the menu names and screen indications may be different, this is not impediment to understanding the operation. In those places where the operations for Macintosh users and Windows users differ, specific explanations are provided.
- This manual is designed for users with the following computer skills:
 - Knowledge of basic computer operations
 - Knowledge of basic mouse operations
 - Knowledge of how to open, close, move, minimize and maximize windows
 - Knowledge of how to move from one folder to another folder

Detailed information about the operations listed above can be found in the printed or online manuals accompanying the computer or operating system software.

Symbols used in this manual

NOTE Extra information about software or cautionary notes.

CAUTION Points requiring special caution.

[page xx] Refer to the page indicated for detailed information.

The software

The following software applications are in the Sanyo Software Pack.

■ Driver software

- USB driver

The USB driver is necessary when using the USB interface in a Windows 98/Windows 98SE environment.

- PC camera device driver

Required for using PC camera with Windows XP.

■ Application software

Please see page 22 for a summary of each software program.

- QuickTime 5

In this manual, referred to as QuickTime.

- PhotoExplorer 7.0SE Platinum (Windows)/PhotoExplorer for Mac 2.0 (Macintosh)

In this manual, referred to as PhotoExplorer.

- Real Color Equalizer 3.0 on PC

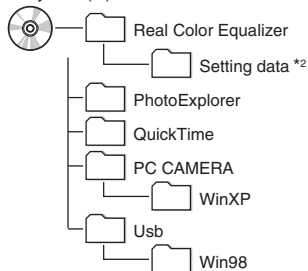
In this manual, referred to as Real Color Equalizer.

Directory map

Below is a directory map of the Sanyo Software Pack contents.

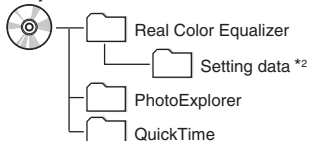
<Windows>

Sanyodsc (d:)*¹



<Macintosh>

Sanyodsc



*1: The drive name may be different on your computer.

*2: Contains the initial settings data for your digital camera's color adjustment palettes.

OPERATING ENVIRONMENT

Operating systems

■ Windows environment

USB storage class

A computer with a standard-equipped USB port, and preinstalled with Windows 98 or Windows 98SE is required. Correct operation cannot be guaranteed for models that have been upgraded to Windows 98 from Windows 3.1 or Windows 95.

Application software

	Windows version					
	95	98*	Me	2000	XP	NT 4.0
QuickTime	○	○	○	○	△	○
Photo Explorer	×	○	○	○	○	×
Real Color Equalizer	×	○	○	○	○	△

○: Supported △: Operation confirmed ×: Not supported

* Including Windows 98SE

■ Macintosh

USB storage class

A model with a standard-equipped USB port, and installed with Mac OS 9.0, 9.1, 9.2, Mac OS X10.1 or later.

CAUTION

When using in a Mac OS X Classic environment

- It is not possible to save or load data directly to or from the card installed in the camera. The data must first be saved once to your hard disk.

Application software

For Mac OS 8.6 or later (except for X).

Hardware requirements

A CD-ROM drive is necessary to install the software.

■ Windows

Photo Explorer hardware operating environment

CPU	Pentium 166 MHz or faster
RAM	64 MB or more (128 MB or more recommended)
Hard disk space	60 MB or more
Monitor	800 x 600 pixels or better
Other	DirectX 6.0 or later

Real Color Equalizer hardware operating environment

CPU	Pentium II 350 MHz or faster Celeron 366 MHz or faster
RAM	64 MB or more (for Windows XP, 128 MB or more)
VRAM	4 MB or more, graphic accelerator for DirectX 6.0 or later
Monitor	800 x 600 pixels or better/16-bit color or more
Other	QuickTime 4 or later

PC Camera operating environment

Only models in which Windows XP was preinstalled.

■ Macintosh

Photo Explorer hardware operating environment

RAM	32 MB (8 MB or more available memory)
Hard disk space	20 MB or more
Other	QuickTime 4 or later (recommended)

Real Color Equalizer hardware operating environment

CPU	PowerPC or faster
RAM	64 MB or more
Monitor	800 x 600 pixels or better/able to display 32000 colors or more
Other	QuickTime 4 or later

MOUNTING AND DISMOUNTING YOUR DIGITAL CAMERA

The following is an explanation of how to connect your camera to a personal computer, enabling you to load the CompactFlash data from your camera to the computer (mount), and also how to remove the CompactFlash from a camera connected to your personal computer as well as disconnect the camera from your personal computer (dismount).

■ Cautions when mounting your digital camera as a removable disk

- Do not alter files or folders in your digital camera in any way. Doing so may result in your camera not recognizing that data.
- Do not edit files in your digital camera. If you want to edit files, first copy them to your computer's hard drive.
- Cards formatted on your computer cannot be used by your digital camera. Format all cards to be used by your digital camera with your digital camera.

For WINDOWS XP users

■ Mounting your digital camera

- ① Start your computer.
- ② Connect your digital camera to the computer's USB connector, and set the camera to the PC connection mode.
 - For an explanation on how to connect the camera to your computer and how to set it to the PC connection mode, refer to your camera's instruction manual.

- 3 Turn on your camera.
 - The message [Found New Hardware] appears in the task tray, showing that the camera is recognized as a drive.

- 4 Install a CompactFlash card in the camera.
 - The CompactFlash is recognized (mounted) as a disk, and the [Removable Disk (d:)] window opens.
 - The drive name (d:) may be different on your computer.

- 5 Select an action.
 - Select the desired procedure from the [Removable Disk (d:)] window.

Dismounting your camera

CAUTION

- To remove the CompactFlash or disconnect your camera, be sure to follow the procedure below. Failure to follow this procedure may cause faulty operation of your computer or loss of CompactFlash data.

■ Removing the CompactFlash

- ➊ Right-click on the camera icon ([Removable Disk (d:)]) in [My Computer].
 - A menu appears.
 - The drive name (d:) may be different on your computer.
- ➋ Select [Remove] from the menu.
- ➌ Confirm that the camera's accessing indicator is not lit or flashing, and remove the CompactFlash.
 - For an explanation on how to remove the CompactFlash from your camera, refer to your camera's instruction manual.

■ Disconnecting your digital camera

- ➊ Click on [Safely Remove Hardware] in the task tray, and select [Safely remove USB Mass Storage Device – Drive (d:)].
 - The [Safely Remove Hardware] dialog box will open.
 - The drive name (d:) may be different on your computer.

For WINDOWS ME and WINDOWS 2000 users

Mounting your digital camera

- 1 Start your computer.
- 2 Connect your digital camera to the computer's USB connector, and set the camera to the PC connection mode.
 - For an explanation on how to connect the camera to your computer and how to set it to the PC connection mode, refer to your camera's instruction manual.
- 3 Turn on your camera.
 - The camera is recognized as a drive, and [Removable Disk (d:)] appears in the [My Computer] window.
 - The drive name (d:) may be different on your computer.
- 4 Install a CompactFlash card in the camera.
 - The CompactFlash is recognized (mounted) as a disk.
 - Double-click on the [Removable Disk (d:)] icon in [My Computer], and you can process the contents of the CompactFlash installed in your camera exactly like you would the data in the other computer drives.

Dismounting your camera

CAUTION

To remove the CompactFlash or disconnect your camera, be sure to follow the procedure below. Failure to follow this procedure may cause faulty operation of your computer or loss of CompactFlash data.

■ Removing the CompactFlash

- ➊ Right-click on the camera icon ([Removable disk (d:)]) in [My Computer].
 - A menu appears.
 - The drive name (d:) may be different on your computer.
- ➋ Select [Remove] from the menu.
- ➌ Confirm that the camera's accessing indicator is not lit or flashing, and remove the CompactFlash.
 - For an explanation on how to remove the CompactFlash from your camera, refer to your camera's instruction manual.

■ Disconnecting your digital camera

- ➊ Right-click on [Unplug or Eject Hardware] in the task tray.
- ➋ Select [Unplug or Eject Hardware].
 - The [Safe to Remove Hardware] dialog box will open.
- ➌ Double-click on [USB Mass Storage Device], select [SANYO VPC-AZ3 USB Device] from the [Stop Hardware Device] dialog box, and click on the OK button.
- ➍ Click on the OK button.
 - You can now disconnect the camera.

For WINDOWS 98/WINDOWS 98SE users

Mounting your camera

For Windows 98 and Windows 98SE users, please install the USB driver (SANYO Digital Camera Mass Storage Drive and SANYO Digital Camera Controller). Install the SANYO Digital Camera Mass Storage Driver before installing the SANYO Digital Camera Controller.

- ❶ Insert the provided CD-ROM (Sanyo Software Pack) in your computer's CD-ROM drive.

- ❷ Connect the digital camera to your computer, and set the digital camera to the PC connection mode.
 - For details, refer to your camera's instruction manual.
 - The [Add/Remove Hardware Wizard] dialog box will open.
 - If the [Add/Remove Hardware Wizard] dialog box does not appear, double-click on the [Add Hardware] icon in [My Computer] to open it, and proceed to step 4.

- ❸ Click on the [Next] button.

- ❹ Specify the USB driver search method and search location.
 - ❶ Place a check in the [Search for the best driver for your device. (Recommended)] checkbox, and click on the [Next] button.
 - ❷ Place a check in the [Specify a Location] checkbox, and click the [Browse] button.
 - The [Browse for Folder] dialog box will open.

- 5 Specify the folder with the USB driver.
- The USB driver is in the CD-ROM's [Usb] folder, in the [Win98] folder.
- ① Double-click on [Sanyodsc(G:)].
- "(G:)" denotes the CD-ROM drive name, which may be different on your computer.
- ② Double-click on [Usb].



- ③ Double-click on [Win98].

- 6 Click on the [OK] button.
- The [Browse for Folder] dialog box closes, and [G:\USB\WIN98] appears in the [Specify a location:] field. The first character (G) may vary depending on your computer configuration.

- 7 Click on the [Next] button.

- 8 When the dialog box appears announcing completion of the installation, click the [Finish] button.
- Installation of the SANYO Digital Camera Mass Storage Driver is now completed. After a while, the [Add/Remove Hardware Wizard] dialog box appears again. Continue to the next step to install the SANYO Digital Camera Controller.

- 9 Install the SANYO Digital Camera Controller.
- Use the same procedure as above to install the SANYO Digital Camera Controller.
 - When installation of the SANYO Digital Camera Controller is completed, USB driver installation is completed.

- 10 Confirm that the digital camera can be mounted.
- When the USB driver has been correctly installed, the digital camera appears in the [My Computer] window as a [Removable Disk] drive. The Removable Disk drive name (H:) may be different on your computer.

NOTE

If [Removable Disk] is not found...

The USB device driver has not been installed correctly. After deleting the USB device driver once by using the procedure below, install it again.

- (1) Right-click on [My Computer], and select [Properties] from the menu.
 - The [System Properties] dialog box will open.
- (2) Click on the [Device Manager] tab.
- (3) Click on [SANYO Digital Camera], and then click on the [Delete] button.
 - If there is no [SANYO Digital Camera], click on the [Cancel] button to close the dialog box, and proceed to step (4).
- (4) Insert the CD-ROM into the drive and re-install the driver.

Disconnecting your digital camera

CAUTION

- To remove the CompactFlash or disconnect your camera, be sure to follow the procedure below. Failure to follow this procedure may cause faulty operation of your computer or loss of CompactFlash data.

■ Removing the CompactFlash

- ❶ Right-click on the camera icon ([Removable disk (d:)]) in [My Computer].
 - A menu appears.
 - The drive name (d:) may be different on your computer.
- ❷ Select [Remove] from the menu.
- ❸ Confirm that the camera's accessing indicator is not lit or flashing, and remove the CompactFlash.
 - For an explanation on how to remove the CompactFlash from your camera, refer to your camera's instruction manual.

■ Disconnecting your digital camera

- ❶ Confirm that the camera's accessing indicator is not lit or flashing.
- ❷ You can now disconnect the camera.

For MAC OS9.xx users

Mounting your camera

- ❶ Start your computer.
- ❷ Connect your digital camera to the computer's USB connector, and set the camera to the PC connection mode.
 - For an explanation on how to connect the camera to your computer and how to set it to the PC connection mode, refer to your camera's instruction manual.
- ❸ Turn on your camera.
 - The camera is recognized as a drive and appears as an icon named [Untitled] on the Desktop.
 - Double-click on the [Untitled] icon, and you can process the contents of the CompactFlash installed in your camera exactly like you would the data in the other computer drives.

Dismounting your camera

CAUTION

- To remove the CompactFlash or disconnect your camera, be sure to follow the procedure below. Failure to follow this procedure may cause faulty operation of your computer or loss of CompactFlash data.
- ❶ Drag the [Untitled] icon for your digital camera on the Desktop to the trashcan.
 - The [Untitled] icon disappears from the Desktop.
 - ❷ Remove the card or CompactFlash.

For MAC OSX users

- Use the same mounting and dismounting procedure as for the MAC OS9.xx. However, if an application which automatically recognizes camera images is installed, it will be activated.

INSTALLING THE APPLICATION SOFTWARE

The Sanyo Software Pack contains the application software indicated below. Installation of each application will serve to optimize your use of the data recorded with your digital camera.

- **QuickTime***

Play back video clips. The recorded audio is played back at the same time.

- **Photo Explorer**

Organizing the data recorded with your digital camera is easy to understand using the graphic screen.

- **Real Color Equalizer**

Create your own color adjustment settings data. In addition to color correction of the 6-color settings by your digital camera, the 12-color mode provides further fine adjustment. Also, settings data created with the Real Color Equalizer can be used in your digital camera.

* By upgrading from QuickTime to QuickTime Pro, you will be able to edit QuickTime movies, among other features. You can upgrade from Apple Computer, Inc.'s web page at <http://www.apple.com/>.

Windows

■ QuickTime installation

- 1** Insert the provided CD-ROM (Sanyo Software Pack) in your computer's CD-ROM drive.
 - The CD-ROM window will open after a few seconds.
 - If the window does not open, double-click on the [Sanyodsc(G:)] icon in [My Computer] to open it. "(G:)" denotes the CD-ROM drive name, which may be different on your computer.
- 2** Open the [QuickTime] folder and double-click on the [QuickTimeInstaller.exe] icon in the [English] folder (or whatever other language you prefer).
 - The QuickTime setup window for beginning the installation procedure will open.
- 3** Follow the instructions on the screen to install the application.
 - The installer program is preset to properly install the QuickTime software.
 - If you are unfamiliar with the computer, we recommend clicking the [Next] button at each screen.
 - Do not enter anything in the [Enter Registration] dialog box, and click on the [Next] button.
- 4** Once the dialog box appears announcing completion of the installation, click on the [Close] button to close the box.
 - This completes the installation of QuickTime.

■ Real Color Equalizer installation

- ➊ Insert the provided CD-ROM (Sanyo Software Pack) in your computer's CD-ROM drive.
 - The CD-ROM window will open after a few seconds.
 - If the window does not open, double-click on the [Sanyodsc(G:)] icon in [My Computer] to open it. "(G:)" denotes the CD-ROM drive name, which may be different on your computer.
- ➋ Open the [Real Color Equalizer] folder and double-click on the [Setup.exe] icon.
- ➌ Follow the instructions on the screen to install the application.
- ➍ Once the dialog box appears announcing completion of the installation, click on the [Finish] button to close the box.
 - This completes the installation of the Real Color Equalizer.

■ PhotoExplorer installation

- ❶ Insert the provided CD-ROM (Sanyo Software Pack) in your computer's CD-ROM drive.
 - The CD-ROM window will open after a few seconds.
 - If the window does not open, double-click on the [Sanyodsc(G:)] icon in the [My Computer] window to open it. "(G:)" denotes the CD-ROM drive name, which may be different on your computer.
- ❷ Run the setup program.
 - Open the [PhotoExplorer] folder and double-click on the [Setup.exe] icon.
- ❸ Follow the instructions on the screen to install the application.
 - When a dialog box prompting you to restart your computer appears, restart your computer.

NOTE

- The PhotoExplorer is a software application for organizing digital camera images. For instructions on loading images from your camera, please see the Help menu for PhotoExplorer.

Macintosh

■ QuickTime installation

- 1 Insert the provided CD-ROM (Sanyo Software Pack) in your computer's CD-ROM drive.
 - The CD-ROM window will open after a few seconds.
 - If the window does not open, double-click on the CD-ROM icon [SanyoDSC] on the Desktop.
- 2 Open the [QuickTime] folder and double-click on the [QuickTimeInstaller] icon in the [English] folder (or whatever other language you prefer).
 - The QuickTime setup window for beginning the installation procedure will open.
- 3 Follow the instructions on the screen to install the application.
 - The installer program is preset to properly install the QuickTime software.
 - Do not enter anything in the [Enter Registration] dialog box, and click on the [Next] button.
 - When a dialog box prompting you to restart your computer appears, restart your computer.

■ Real Color Equalizer installation

- ① Insert the provided CD-ROM (Sanyo Software Pack) in your computer's CD-ROM drive.
 - The CD-ROM window will open after a few seconds.
 - If the window does not open, double-click on the CD-ROM icon [SanyoDSC] on the Desktop.
- ② Open the [Real Color Equalizer] folder and double-click on the [RealColorEqualizerInstall] icon.
- ③ Follow the instructions on the screen to install the application.
 - When a dialog box prompting you to restart your computer appears, restart your computer.

■ PhotoExplorer installation

- ① Insert the provided CD-ROM (Sanyo Software Pack) in your computer's CD-ROM drive.
 - The CD-ROM window will open after a few seconds.
 - If the window does not open, double-click on the CD-ROM icon [SanyoDSC] on the Desktop.

- ② Install the PhotoExplorer.
 - Open the [PhotoExplorer] folder and copy the [English] folder (or whatever other language you prefer) to your hard disk.
 - When the folder has been copied, installation of the application is completed.

USING THE REAL COLOR EQUALIZER

The Real Color Equalizer program helps you create settings data that can be used for your digital camera's color adjustment palettes. You can make the color adjustment settings data while viewing an images captured with your digital camera. In addition, settings data created with the Real Color Equalizer can be loaded to and used by your camera.

Running and closing the Real Color Equalizer

■ Running the application

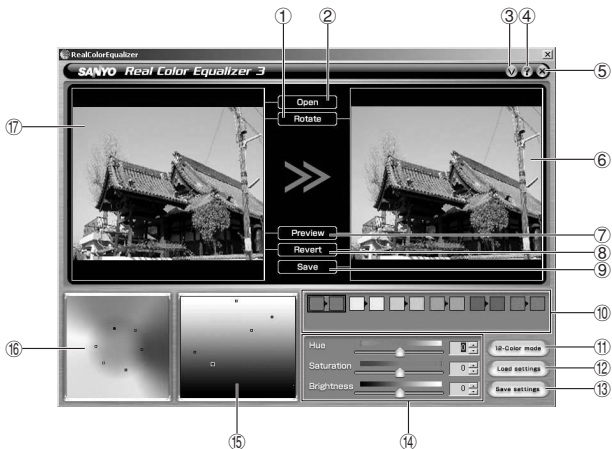
- 1 Run the Real Color Equalizer application.

<Windows>

- Click on the [Start] button, and select [Programs] - [Sanyo DSC Utilities] - [Real Color Equalizer].

<Macintosh>

- Open the folder in which the Real Color Equalizer was installed, and double-click on the [Real Color Equalizer] icon.
- The Real Color Equalizer application starts, and the [RealColorEqualizer] window opens.



[Real Color Equalizer] window

- | | |
|------------------------------|---------------------------------|
| ① [Rotate] button | ⑩ Color selection panel |
| ② [Open] button | ⑪ [12-Color mode] button |
| ③ Product information button | ⑫ [Load settings] button |
| ④ Help button | ⑬ [Save settings] button |
| ⑤ Exit button | ⑭ Color adjuster panel |
| ⑥ Edited image window | ⑮ Brightness coordinates panel |
| ⑦ [Preview] button | ⑯ Color space coordinates panel |
| ⑧ [Revert] button | ⑰ Original image window |
| ⑨ [Save] button | |

■ Exiting the application

- ① Click on the exit button.

Loading the image data and settings data

■ Loading the image data

Load an image that was captured on your digital camera. When loading an image that was captured using adjusted colors settings, the settings data is loaded at the same time.

NOTE

- Images that can be loaded to the Real Color Equalizer are limited to those captured with your digital camera (VPC-MZ3/AZ3) in the JPEG or TIFF format. Images captured with other digital cameras cannot be loaded. In addition, image data that was processed using your computer's application software, including the Real Color Equalizer, cannot be read.

- ❶ Run the Real Color Equalizer program.
- ❷ Click on [Open].
 - The [Open] dialog box will open.
- ❸ Select the image to load, and click on the [Open] button.
 - The image appears both in the original image window and the edited image window.
 - On the color adjuster panel, color adjuster sliders appear.



- ❶ Hue slider
- ❷ Saturation slider
- ❸ Brightness slider

■ Loading the settings data

Load the color adjustment settings data created using the Real Color Equalizer.

- 1 Run the Real Color Equalizer program.
- 2 Load the image data.
 - To load the image data, please see “Loading the image data” on page 31.
- 3 Click on the [Load settings] button.
 - The [Open] dialog box will open.
 - The names of files containing color adjustment settings data are shown as sancam**.cfg (** represents a number).



① [Load settings] button

- 4 Select the data you wish to load, and click on the [Open] button.
 - The settings data is loaded.

NOTE

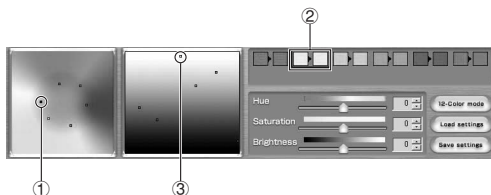
- At extreme settings for hue and saturation, such as +50 or -50, the settings data information may not be displayed correctly on each panel.

Adjusting the colors

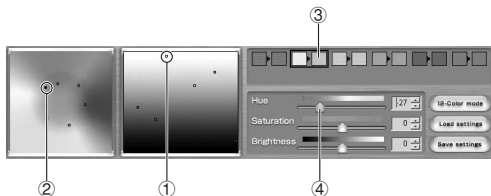
With the Real Color Equalizer, the hue, saturation and brightness values of the primary colors of light (red [R], green [G], and blue [B]) are set independently. Color adjustment can be performed using the 6-color mode or the 12-color mode.

■ Adjusting the hue

- 1 Load the image data (see page 31).
 - If using the color adjustment settings data that you created, load the settings data (see page 32).
- 2 On the adjusted color selection panel, click on the color you wish to adjust.
 - When you click on the adjusted color selection panel, the panel's outer frame and the coordinate points on the color space coordinates panel are displayed clearly.



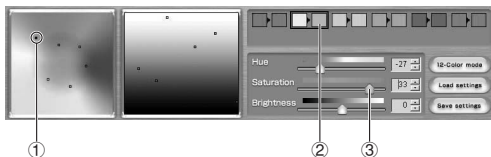
- 1 Selected coordinate point on the color space coordinates panel
 - 2 Color selection panel for the color to be adjusted
 - 3 Selected coordinate point on the brightness coordinates panel
- 3 Move the hue slider (use the mouse to drag it), to adjust the hue.
 - When the slider is moved, the setting value to the right changes, and you can preview the adjusted hue to the right of the original hue on the color selection panel.



- ① New coordinate point on the brightness coordinates panel
 - ② New coordinate point on the color space coordinates panel
 - ③ Adjusted-color preview
 - ④ Hue slider
- For fine adjustment of the hue setting, while watching the adjusted-color selection panel preview display, click on the up or down button to change the value.
 - The setting range for the hue is determined by the correlation between the selected color and the color adjacent to it on the color space coordinates panel.
 - When the hue is changed, the coordinate point on the color space coordinates panel and the coordinate point on the brightness coordinates panel move.
 - Hue values can be adjusted within a range from -50 to $+50$.

■ Adjusting the saturation

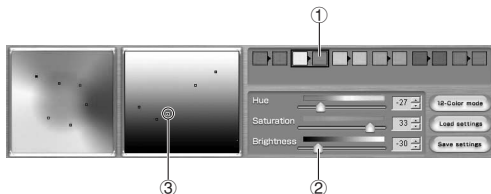
- ④ Move the saturation slider (use the mouse to drag it), to adjust the saturation.
- When the slider is moved, the setting value to the right changes, and you can preview the adjusted saturation to the right of the original saturation on the color selection panel.
 - For fine adjustment of the saturation setting, while watching the color selection panel preview display, click on the up or down button to change the value.
 - Saturation values can be adjusted within a range from -50 to +50.



- ① New coordinate point on the color space coordinates panel
- ② Adjusted-color preview
- ③ Saturation slider

■ Adjusting the brightness

- ⑤ Move the brightness slider (use the mouse to drag it), and adjust the brightness.
 - When the slider is moved, the setting value to the right changes, and you can preview the adjusted brightness to the right of the original saturation on the color selection panel.
 - For fine adjustment of the brightness setting, while watching the color selection panel preview display, click on the up or down button to change the value.
 - Brightness values can be adjusted within a range from -50 to +50.



- ① Adjusted color preview
- ② Brightness slider
- ③ New coordinate point on the brightness coordinates panel

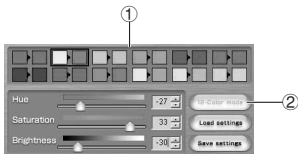
■ Using the 12-color mode

- ① After loading the image data, click on the [12-Color mode] button.
 - A confirmation dialog box will appear.



- ① 6-color adjusted-color selection panel
- ② [12-Color mode] button

- ② Click on the OK button.
- The panel changes to the 12-color mode adjusted-color selection panel.
 - When the 12-color mode is selected, the [12-Color mode] button is greyed out, making it impossible to return to the 6-color mode.



- ① 12-color adjusted-color selection panel
- ② [12-Color mode] button (greyed out)

NOTE

About the hue settings

- Hue is described with the words we normally think of as describing color: red, yellow, green, blue, etc. Hue can be adjusted within a maximum range of -50 to $+50$, but the actual range that can be set is limited depending on the other hue settings of an adjusted color.

About the saturation settings

- Saturation can be described as the intensity or purity of a color. Setting the saturation value to a $+$ value intensifies the color; when set to a $-$ value, the color becomes desaturated, or less intense (gray).

About the brightness settings

- The brightness setting specifies the degree of lightness or darkness. When the brightness setting is set to the $+$ side, the image is lighter; on the $-$ side it is darker.

Sampling the hue, saturation and brightness of a color from an image, and plotting them on the color space coordinates panel and brightness coordinates panel

- On the image, click on the point you wish to sample. The hue and saturation of the color at the selected point are indicated by a small circle on the color space coordinates panel, and the brightness on the brightness coordinates panel. In addition, you can click on the color space coordinates panel and brightness coordinates panel to magnify them.
- A maximum of 10 hue/saturation/brightness points can be displayed on the color space coordinates panel and brightness coordinates panel. Each time another point is specified, the earliest set point is deleted.

Returning all values to their original settings

- Click on the [Revert] button.
- The colors are returned to the original colors of the image that was loaded.
- The hue, saturation and brightness adjusted values return to the values prior to the last slider action.

To display the original image window or edited image window full-screen

- Click on the [Preview] button.
- The original image window is displayed full-screen.
- Click anywhere on the full-screen image to toggle between the original image and the edited image.
- To return to the main window, close the full-screen window.

To rotate the image

- Click on the [Rotate] button.
- Each time you click on [Rotate], the image is rotated 90 degrees clockwise.

CAUTION

- Once an image has been processed using the Real Color Equalizer, it cannot again be loaded to the Real Color Equalizer. For this reason, the procedure to adjust colors should be followed to the end and the data saved.
- Real Color Equalizer data that was created using the VPC-AZ3 should be used only with the VPC-AZ3. If such setting data is downloaded to a different camera having the Sanyo color equalizer capability, the color correction values may revert to their initial Real Color Equalizer settings.

Save

■ Saving the settings data

The hue and saturation settings adjusted using the Real Color Equalizer can be saved as color settings data, which can then be loaded to your digital camera and used for adjusting the colors.

- 1 Click on the [Save settings] button.
 - The [Browse for Folder] dialog box will open.

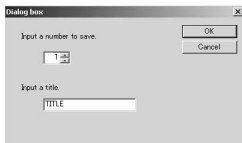


- 1 [Save settings] button

- 2 Specify a location to save the settings data.

- 3 Click on the [OK] button.

- The dialog box to enter a number and title will appear.



- ④ Enter a number and title for the settings.
- A number and title can be assigned to the settings data.
 - The file name for the data is sancam**.cfg. “***” represents the number (from 1 to 99) that you assign to the settings data.
 - The title you assign will displayed when the settings data is loaded to your digital camera. It is not necessary to enter a title, but may be convenient to distinguish one file from another when selecting the data file to load to the camera. Up to 10 characters can be entered for the title. If you do not enter a title, then [TITLE] is automatically assigned as the title.
- ⑤ Click on the [OK] button.

■ When using the settings data on your digital camera

Save the settings data in the [System] folder of the card. If the data is saved in a different folder, the digital camera cannot read the data. For information regarding the digital camera's folder configuration and how to use the settings data, please refer to the Instruction Manual for your camera.

■ Saving images

- 1 Click on the [Save] button.
 - The saving images dialog box will appear.
- 2 Specify the drive and folder in which to save the file, and enter a file name.
- 3 Select a file format for the file.
 - <Windows> BMP or JPEG
 - <Macintosh> PICT or JPEG
- 4 Click on the [Save] button.
 - The image currently displayed is saved to the specified location.

NOTE

About the initial color adjustment settings data for the digital camera

- Color correction data settings are prestored in your digital camera. Even if you have overwritten the color adjustment settings with your own data, you can reset the settings to their original values by loading the settings data from the provided CD-ROM (Sanyo Software Pack, Real Color Equalizer folder - Setting data folder) to your camera.
The file names for the original settings data are sancam01.cfg, sancam02.cfg, sancam03cfg and sancam04.cfg.

USING AS A PC CAMERA

If running Windows XP, you can use the VPC-AZ3 as a PC camera. Before using the VPC-AZ3 as a PC camera, please install the device driver.

- ❶ Insert the provided CD-ROM (Sanyo Software Pack) in your computer's CD-ROM drive.
- ❷ Connect the digital camera to your computer, and set the digital camera to the PC camera mode.
 - For details, refer to your camera's instruction manual.
 - The [Found New Hardware Wizard] dialog box will open.
- ❸ Specify the installation method and the search location.
 - ❶ Select the [Install from a list or specific location [Advanced]] radio button, and click on the [Next] button.
 - ❷ Select the [Search for the best driver in these locations] radio button, place a check in the [Include this location in the search] checkbox, and click on the [Browse] button.
 - The [Browse for Folder] dialog box will open.
- ❹ Specify the folder with the PC camera driver.
 - The PC camera driver is in the CD-ROM's [PC CAMERA] folder, in the [WinXP] folder.
 - ❶ Double-click on [Sanyodsc(G:)].
 - "(G:)" denotes the CD-ROM drive name, which may be different on your computer.
 - ❷ Double-click on [PC CAMERA].

↓

 - ❸ Double-click on [WinXP].

- 5 Click on the [OK] button.
- The [Browse for Folder] dialog box closes, and [G:\PC CAMERA\WinXP] appears in the [Specify a location:] field. The first character (G) may vary depending on your computer configuration.

- 6 Click on the [Next] button.

NOTE

- A warning dialog box related to hardware installation will open, but click on the [Continue Anyway] button and proceed to the next step.
- 7 When the dialog box appears announcing completion of the installation, click the [Finish] button.
- Installation of the device driver is now completed.
 - If the installation was successful, the [SANYO Digital Camera PC Camera] icon appears in the [My Computer] window.

NOTE

If the [SANYO Digital Camera PC Camera] icon does not appear in the [My Computer] window...

- The device driver installation may not have been successful. Open the [Printer and Other Hardware] folder in [Control Panel], delete [SANYO Digital Camera PC Camera] from [Scanners and Cameras], and reinstall the device driver.

SANYO

SANYO Electric Co., Ltd.