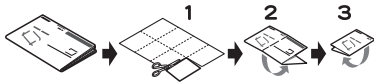


SANYO

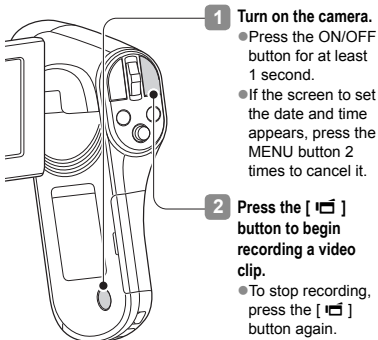
Dual Camera
VPC-CG20EX
VPC-CG20
VPC-CG20GX
VPC-CG20PX
VPC-CG20TA

Xacti QUICK GUIDE



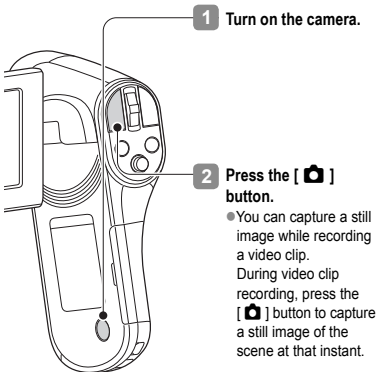
Printed in Vietnam
1AG6P1P5708-- SG414EX, U, GX, PX, TA (0110AB-SD)

STEP 1 RECORD A VIDEO CLIP

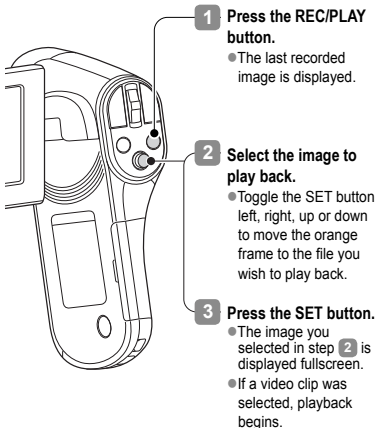


If the image is not captured...
Is there enough power left in the battery? Recharge the battery pack.
(See "Insert the battery pack" on the reverse side.)

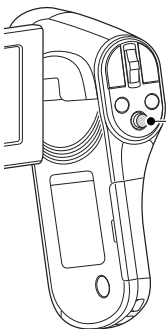
STEP 2 CAPTURE A STILL IMAGE



STEP 3 VIEWING IMAGES



STEP 4 DELETING IMAGES



- 1 Display the file that you want to delete.
- 2 Toggle the SET button up.
 - The Confirm Delete Screen appears.
- 3 Select "DELETE", and press the SET button.
 - The current image is deleted.
 - To return to the Playback Screen, select "EXIT", and press the SET button.

Did your photos turn out the way you hoped? Even if you make a mistake, it's easy to delete the pictures you aren't satisfied with. Unlike film cameras, with a dual camera you can take all the photos you want, keep the ones you like and delete the rest.

COPYING FILES TO A COMPUTER (WINDOWS XP)

- 1 Start your computer, and use the supplied USB interface cable to connect your camera to the computer.
 - Connect the camera's USB/AV terminal to the computer's USB connector.
 - The USB Connection Screen appears on the camera's monitor.
- 2 Select "COMPUTER", and press the SET button.
 - The screen to select the connection mode appears.
- 3 Select "CARD READER", and press the SET button.
- 4 Select an action.
 - Select the desired procedure.
- 5 Copy the desired camera file(s) to the computer.

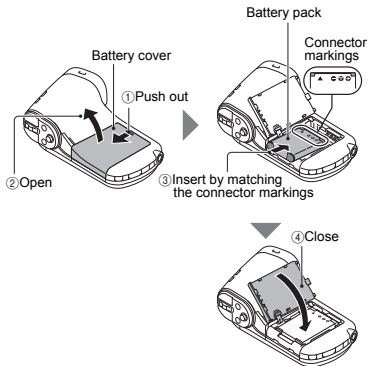
CAUTION

- To access the data in the camera's internal memory...
- Remove the card from the camera.

INSTALL THE BATTERY PACK AND CARD

Insert the battery pack

Please charge the supplied battery pack before using it.



Insert the card

● A card is not included with your camera. Please purchase a commercially sold card.

